



## Samsung Galaxy S® II Software Upgrade

Samsung has released a software update for the C Spire Samsung Galaxy S II(SCH-R760), OS Jelly Bean software version 4.1.2 version build GB28. Please follow the instructions below to download and install Simple Upgrade Tool using your Windows PC.

**This software upgrade is only valid for the C Spire Samsung Galaxy S II (SCH-R760). It is incompatible with all other models.**

### Requirements

#### Computer

- Desktop/Laptop computer running either Microsoft Windows 7, Vista, or XP  
Currently, there is no support at this time for Apple computers
- All firewall & anti-virus programs should be disabled
- Administrative privileges required to download & install software including drivers
- An available USB port on the PC that supports 2.0 USB

#### Mobile Device

- Fully charged battery

#### Other

- USB data cable (included in Retail Box) **Note:** this is the same cable used to charge your device
- Direct connection of the USB cable to the computer's USB port is strongly advised. The use of a USB hub or docking station is not recommended.
- Your PC must be connected to a live internet connection to download the SimpleDL tool

## Back Up Your Information

**Important:** This update was designed to simply upgrade the operating system of the device while leaving certain types of user data intact. This user data includes pictures, videos, messages and contacts. Certain settings, such as wallpaper and ringtone assignments, may be reset back to factory default. To be safe, it is best practice to always back up all data and assume that everything will be lost.

Below you will find options to backup contacts, messages and help to reinstall third party applications.

**Note:** When you sync to your Google Gmail and Exchange ActiveSync® accounts, you are backing up your information. Google Gmail and Exchange ActiveSync information on your device including contacts are stored remotely on the Google and Microsoft Exchange server.

### Contacts

- **Save Contacts to SD Card**

#### Export to SD Card

1. From the Home screen, touch **Contacts > Menu > More**.
2. Touch **Import/Export > Export to SD card**.
3. Confirm export by selecting **OK**.

#### Import to SD Card

1. From the Home screen, touch **Contacts > Menu > More**.
2. Touch **Import/Export**, then touch **Import from SD card**.
3. Confirm export by selecting **OK**.

- **Google Gmail**

1. From the Home screen, press the **Menu** button > **Settings > Accounts and Sync**.
2. Touch your Google account to display the **Data and synchronization** screen.
3. To sync your Gmail, Calendar or Contacts, touch the setting to enable synchronization, a check mark appears in the check box.
4. Press **Sync now**.

- **Exchange ActiveSync Mail**

1. From the Home screen, press the **Menu** button > **Settings** > **Accounts and Sync**.
2. Touch your Corporate Mail account to display the **Data and synchronization** screen.
3. To sync your Email, Calendar or Contacts, touch the setting to enable synchronization, a check mark appears in the check box.
4. Press **Sync now**.

### **Text Messages**

- To save important text messages, you can forward it to an email address.
  1. From the Home screen, touch **Messaging**.
  2. Select text message that you want to save.
  3. Press and hold the text message. You will see a menu for Message options, which allows you to **Forward** the selected text message.

### **Applications**

- Any installed applications downloaded from the Android market may need to be re-installed. To re-download paid applications follow the steps below:
  1. From the Home screen, touch **Applications** > **Play Store** > **Menu** > **My Apps**.
  2. If prompted, sign in with your Google account credentials.
  3. Paid applications will populate in the list shown.
    - To re-download Free applications you can visit [market.android.com](http://market.android.com) and log-in with your Google account information. All previously downloaded applications are listed in My Library.

## **Step 1: Obtaining Simple Upgrade Tool**

1. To obtain a copy of the Simple Upgrade Tool, click the download button below.



<https://link.cspire.com/FaYmsf> (Case Sensitive)


2. Save the file to a specified location. We recommend Desktop for easy access.

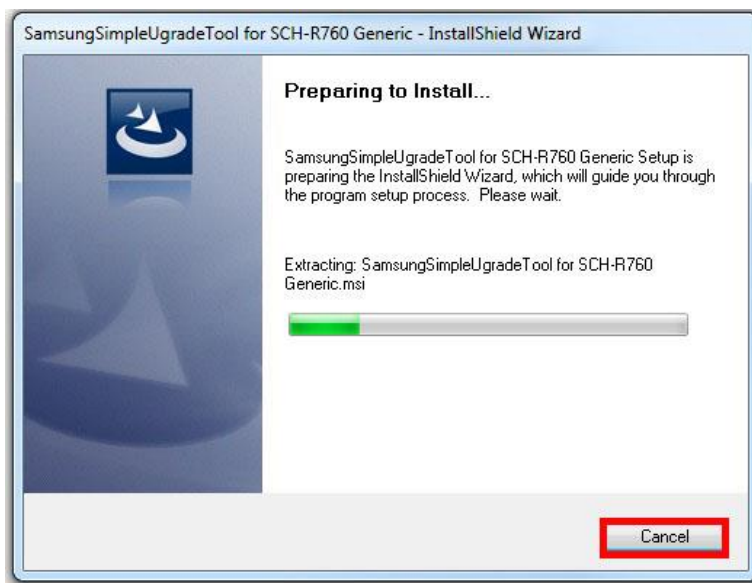
## Step 2: Installing Simple Upgrade Tool

**Important:** We highly recommend that you install the Samsung Galaxy S II USB Driver Software for your PC before beginning the installation.

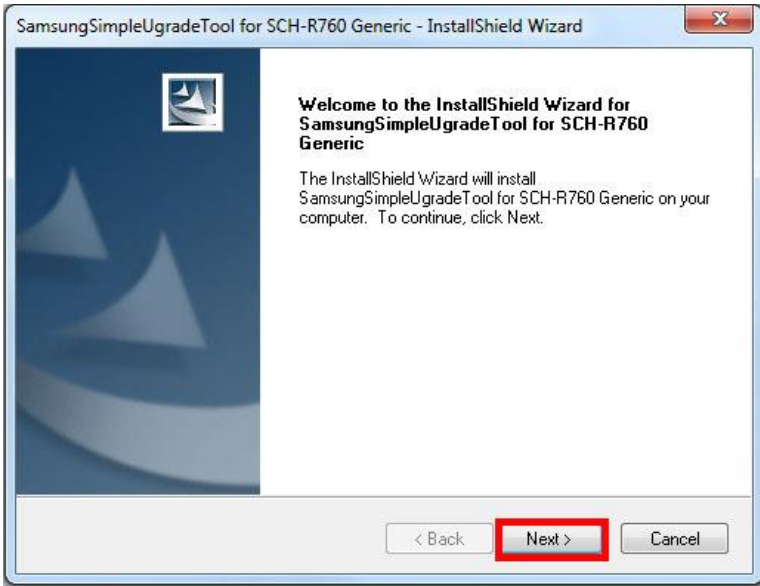
<http://www.samsung.com/us/support/owners/product/SCH-R760IBAXAR>

Description ^	OS	Release Date	Language	Size (MB)	Download File
Device(Install),Tethering (Software) (ver.GB28)	Win XP/Vista/Windows 7	Mar 14, 2013	ENGLISH	511.66	<a href="#">EXE</a>
Device(Install),USB Driver (Software) (ver.1.5.14.0)	Win XP/Vista/Win 7/Win 8	Dec 16, 2012	ENGLISH	23.06	<a href="#">EXE</a>

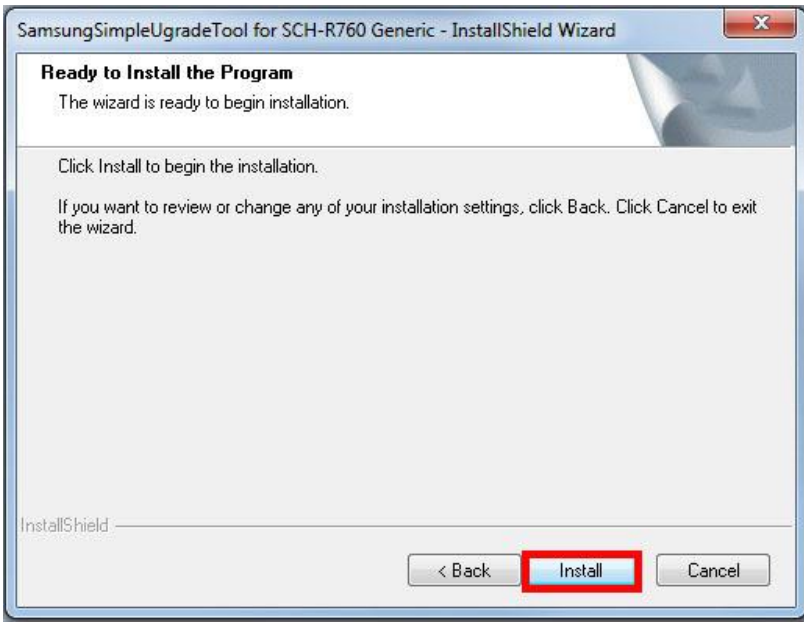
1. Double click the SimpleDL file . The program will install the Simple Upgrade Tool on your computer.



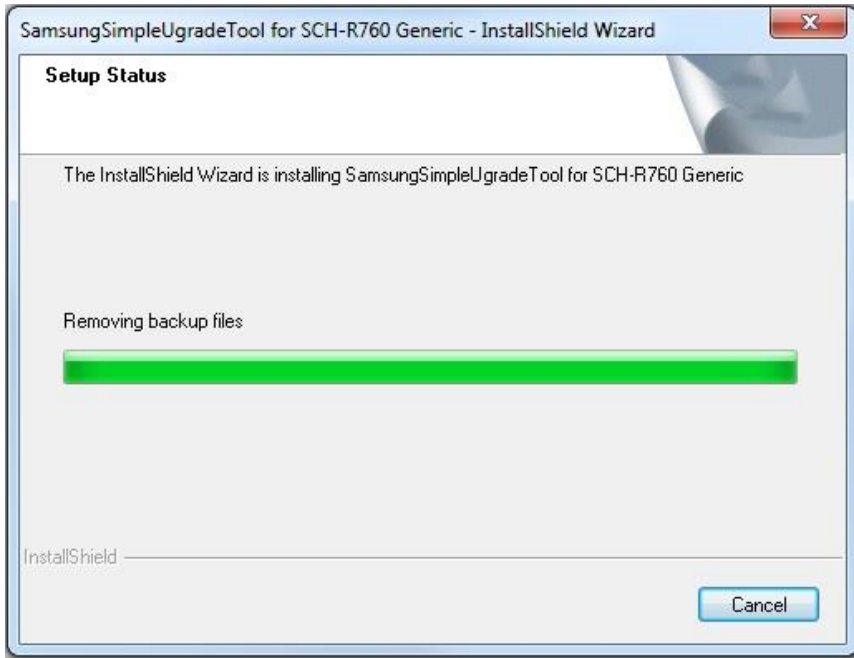
2. Select **Next >** to continue.




3. Select **Install** to begin the installation.




4. Do not select Cancel during the installation process.

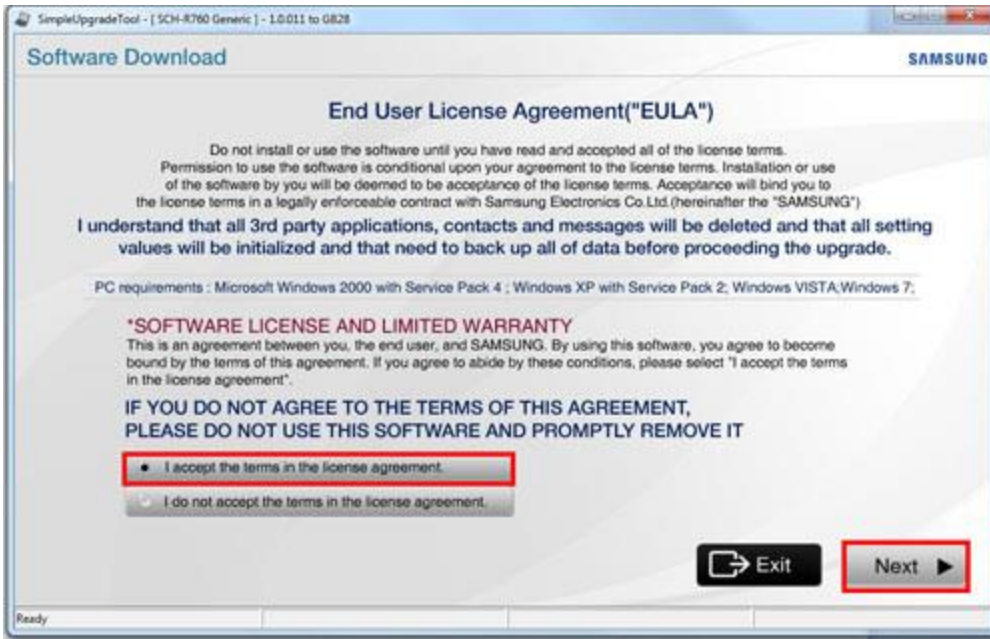


5. After the Simple Upgrade Tool has been installed, select **Finish**. If directed to Restart computer, select **Yes, I want to restart my computer now** and select **Finish**.

6. Please Notice the new  icon that has been installed on your Desktop.

### Step 3: Device Upgrading

1. Click on the Samsung Simple Upgrade Tool  icon on your Desktop.
2. After reading the End User License Agreement, check the button "**I accept the terms in the license agreement.**" and then select **Next**.



3. A warning will prompt you to synchronize the data on your mobile device and to charge your battery fully before proceeding with the software upgrade. Select **Next** after these steps have been performed.



4. Remove the battery from your device, then replace the battery in the device.



5. Simultaneously press and hold the **Volume down** key and **Power** key until the following screen appears. Select **Next**.



6. Press the **Volume up** key. Select **Next**.





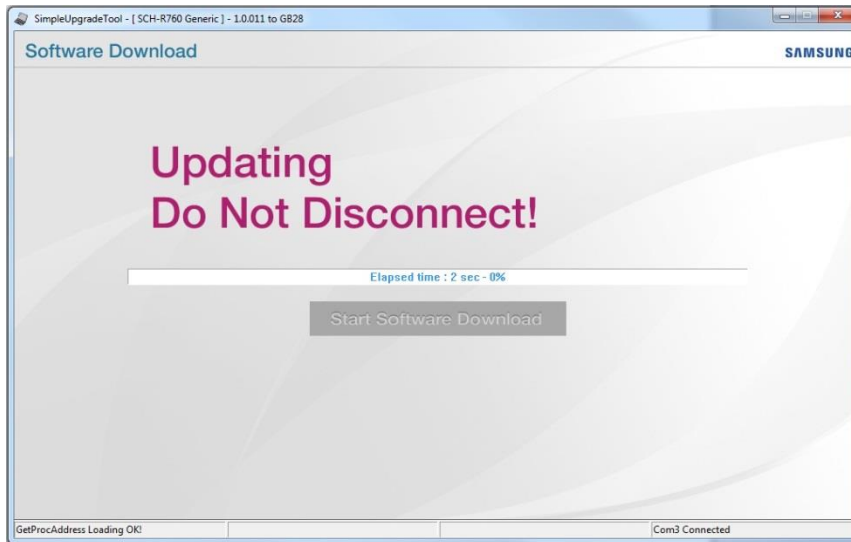
7. Plug your USB data cable into your PC and device. Device drivers will be installed. Do not unplug the USB data cable from the device. Once drivers are installed select **Next**.



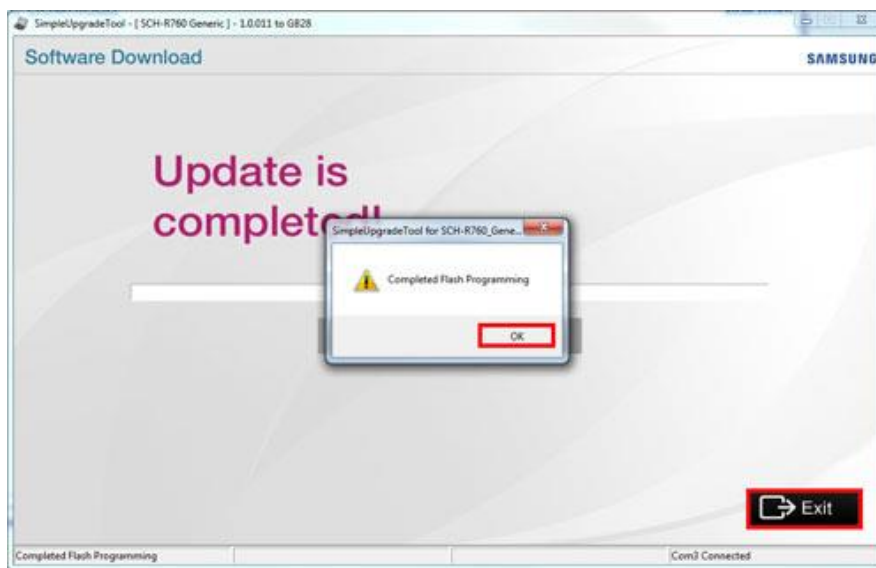
8. Press **Start Software Download** button to start the upgrade process



9. Please do not disconnect the USB cable from the computer or the mobile device. The mobile device may be inoperable if disconnected during the upgrade process. The upgrade process may take up to 15 minutes.



10. A popup message will show that the software upgrade is complete. Select **OK**.



11. Select **Exit** to exit the Simple Upgrade Tool.
12. After the software upgrade, the phone will restart.
13. Unplug the USB cable from the computer and the mobile device.

## Step 4: Verify Software Version

After completion of the software upgrade, please verify the software version on the mobile device is accurate.

1. From the Home screen, press the **Menu > Settings > About Phone**.
2. The software version will be listed under the **Build number** heading and will be **JZ054K.SCH-R760X.GB28**. This is the latest operating system Jelly Bean software update.
3. At this time you can transfer the content we backed up earlier to your updated device.

## Release Notes

- Android 4.1.2 OS Jelly Bean update
- Fixed call log view mode to support message logs with call logs
- Fixed lock screen to correctly display Home or Roaming state
- Fixed dialer log view mode to always retain user preferred setting
- Fixed Email view mode to retain user preferred setting
- Fixed SMS messages showing failed even though they have succeeded
- Fixed Microsoft 2010 Exchange remote wipe functionality
- Fixed blank MMS when sending to a group
- Added dialer keypad function to activation screen
- Optimized default backlight key timeout
- Voice talk hard-key shortcut changed to long press search for Jelly Bean
- Fixed Voicemail # after Factory Data Reset
- Fixed Loss of network data after factory data reset
- Added Google download service patch causing device instability