



UNIFI for Desktop

User Guide

Release 22.5.1

Document Version 1.2

Contents

Contents.....	1
1 About IP Voice UNIFI for Desktop.....	4
2 Getting Started.....	4
2.1 Installation	4
2.2 Sign In	4
2.3 Main Window.....	5
My Information	5
Your Presence	6
Location.....	6
2.4 Communications Window	6
2.5 Start Chat	6
2.6 Make Audio or Video Call	7
2.7 Share Your Desktop	7
2.8 Active Communications	7
2.9 My Room.....	8
2.10 Select Audio Devices.....	8
3 Contacts.....	8
3.1 Add.....	8
3.2 Edit.....	9
3.3 Filters.....	9
4 Presence.....	9
5 Chat	10
5.1 Chat View.....	10
5.2 File Transfer.....	11
5.3 Group Chat.....	11
5.4 Chat Recording	11
6 Audio and Video Calls	12
6.1 Call from Computer.....	12
6.2 Call from Phone	12
6.3 Answer Call	13
6.4 Contact Name Lookup for Incoming Calls.....	13
6.5 Missed Call or Communication	13
6.6 Full Screen in Video Call	13
6.7 Multiparty Sessions.....	13
6.8 Call Waiting.....	14
6.9 Call Transfer.....	14
6.10 Message Waiting Indication and Voice Mail.....	14
6.11 Call Park and Retrieve.....	14
6.12 Call Pull	14

6.13 Forced Logout.....	14
6.14 Echo (test) Service	15
6.15 Headset Support.....	15
7 Desktop Share	15
8 My Room.....	16
9 Search.....	17
10 Full Enterprise Directory.....	19
11 Communications History	19
12 Security Classification	19
13 Preferences	19
13.1 Credentials.....	20
My Room.....	20
Web Collaboration	20
Protocols	20
Device Management.....	20
13.2 General	20
Language	20
Log In	20
Confirmations.....	20
Logging.....	20
13.3 Audio	20
Output Device (Speakers)	20
Voice Recording (Microphone)	21
Alert Signal.....	21
Sounds	21
13.4 Video	21
Capture Device	21
Video Size	21
13.5 Proxy	21
Proxy Settings	21
14 Call Settings.....	21
14.1 Anywhere Number	21
14.2 Remote Office	22
14.3 Forward Calls.....	22
14.4 Do Not Disturb	22
14.5 Simultaneous Ring Personal	22
15 Sign Out.....	23
15.1 Sign Out of IP Voice UNIFI.....	23
15.2 Exit Application	23
16 Multi-Device Support	23

17 System Requirements	24
18 Appendix A: Keyboard Shortcuts for Desktop	25
19 Appendix B: Configure USB Headsets	26

1 About IP Voice UNIFI for Desktop

C Spire's IP Voice UNIFI is a native Windows and Mac client for Unified Communications, providing the following communication features:

- Instant Messaging and Presence
- Voice Calling (VoIP)
- Voice Calling (Desk phone)
- Video Calling
- Desktop Sharing
- IP Voice Call Settings

2 Getting Started

This section contains the essential information for getting started with IP Voice UNIFI for desktop.

2.1 Installation

Your service provider provides the download of the installer.

- Windows
 - Double-click the installer executable and follow the installation instructions.
 - Launch IP Voice UNIFI.
- Mac
 - Double-click the disk image.
 - Copy the application into the Applications folder.
 - Launch IP Voice.

2.2 Sign In

When you first launch the application, you are prompted to sign in.

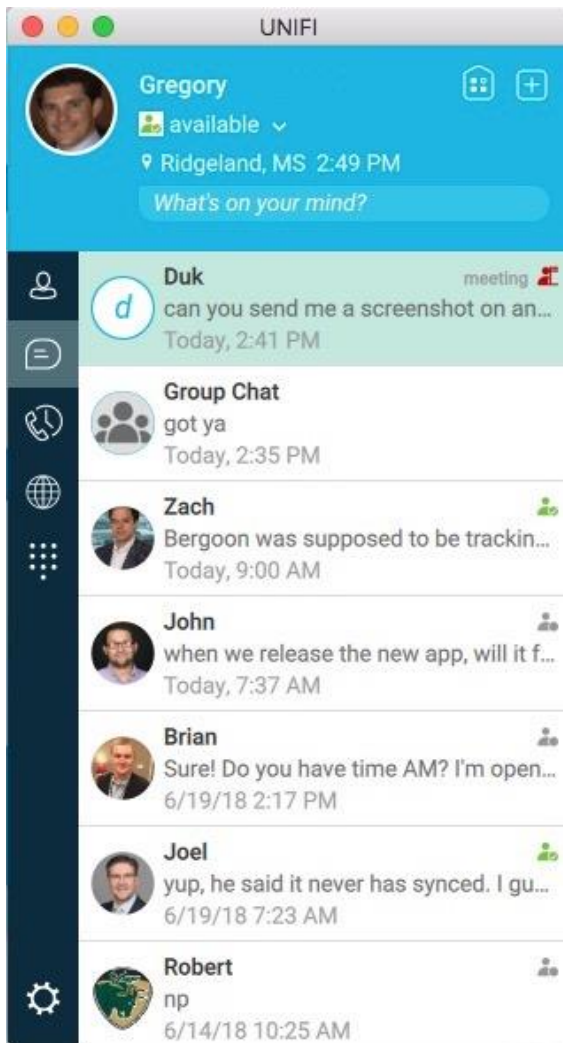
1. If displayed, enter the login Uniform Resource Locator (URL) provided by the service provider.
2. Enter your IP Voice user name and password.
3. Select whether you would like IP Voice UNIFI to remember your password.
4. Select whether you would like IP Voice UNIFI to sign you in automatically on subsequent launches.
5. Click Sign In.

NOTE: If you choose automatic sign in, you are automatically signed in and taken to the contact list upon subsequent IP Voice UNIFI launches. Otherwise, you are presented with the Sign In screen.

After logging in, a popup dialog may appear informing you about emergency calls. You may also see a banner in the Main window related to emergency calls. Depending on your service provider settings, emergency calls may not be allowed. In this case, calling an emergency number displays a popup dialog. A notification message in the Main window may also display.

2.3 Main Window

When you start IP Voice UNIFI for the first time, your Contacts list is empty. Use the search field to find people and add them to your Contacts list. Contacts can also be added manually by clicking the Add button. Client windows can also be set to be always using the main window menu option. Note also, that depending on your service provider settings, the order of the left pane icons may vary. The left pane call settings icon and menus are visible depending on your service provider settings. The dial pad is also integrated with the Main window.










	My Information – View and update your information, for example, your presence, avatar, and location.
	Contacts – View your contacts.
	Communications History – View previous chats and calls.
	My Room – This is your permanent communication room. Participants can dial in to your audio bridge.
	Full Enterprise Directory – Show all contacts of the directory.
	Dial Pad – Make calls, it is integrated with the main window.
	Call Settings Menu – Use for quick access to call settings such as call forwarding.
	Add – Add a contact, group, or conference.
	Chat – Start an instant message conversation with a selected contact.
	Call – Make an IP audio call to a selected contact
	Call from Phone – Make a Click-To-Dial call from your desk phone (or secondary device).
	Video Call – Make a video call to a selected client (VoIP).

My Information

- Click the avatar to update your status or location and enter free text.
- Double-click the avatar to upload a picture or use a right-click menu.
- Right-click the avatar to update your status.

Your Presence

You can set your presence to one status indicated in the following table.

Icon	What it means
	The green presence icon indicates that you are online and ready for communication.
	The yellow presence icon indicates that you are online but have been idle or away from your computer for more than ten minutes.
	The red presence icon indicates that you are busy and do not want to be disturbed.
	This icon indicates that you have turned on your Do Not Disturb setting. You will not be able to receive phone calls or instant messages while this setting is enabled.
	The grey presence icon indicates that you are offline and the only available contact method is calling.
	This icon indicates that you are busy on a call. This is an automated presence status.
	This icon indicates that you are busy in a meeting. This is an automated presence status. The <i>Busy – In Call</i> status overrides the <i>Busy – In Meeting</i> status so this one is only seen if there is a meeting but no call.

IP Voice UNIFI can automatically update your presence to the following:

- Busy In Call
- Busy in Meeting (Windows only)

Location

Your location is automatically determined by your public IP address; however, you can manually set the text to appear for your location and time zone using the location dialog box.

2.4 Communications Window

After starting communication with one or more contacts, a Communications window is displayed for chat and may be displayed for calls depending on your IP Voice settings. The call window can also be integrated with the Main window. From this window, you can perform the following actions:

- Escalate a chat to include audio, video, and desktop sharing
- End an audio or video call
- Open the dial pad
- Mute your microphone
- Adjust your speaker volume
- Place a call on hold
- Transfer a call

2.5 Start Chat

Start a chat using one of the following methods:

- Double-click a contact from the Contacts list or search results.
- Left-click one or more contacts from the Contacts list or search results and click the Chat button.
- Right-click one or more contacts from the Contacts list or search results and click the Chat button.
- On the Communications History list, double-click a chat entry.
- In a Communications window, click the Chat button.
- In a one-to-one chat, transfer files by clicking the Send File button in the Communications window or use the drag-and-drop method so that they are moved to the Communications window.

2.6 Make Audio or Video Call


Make an audio or video call using one of the following methods:

- Hover over one contact from the Contacts list or search results and click the Call, Call from Phone, or Video.
- Right-click one or more contacts from the Contacts list or search results and click the Call, Call from Phone, or Video.
- Enter a phone number in the Search and Dial field.
 - Press ENTER to start a VoIP call.
 - Click the Call, Call from Phone, or Video button.
- Open the dial pad, enter a phone #, then click the Call, Call from Phone, or Video button.
- On the Communications History list, double-click a call entry.
- In the Communications window, click the Call, Call from Phone, or Video button.
- When viewing a contact's profile, click the Call, Call from Phone, or Video button.

NOTE: If dialing a phone number that requires additional dual-tone multi-frequency (DTMF) tones (for example, a conference bridge), you can type the numbers on your keyboard while the Communications window has focus or open the dial pad in the Communications window.

2.7 Share Your Desktop

Share your desktop by following these steps:

1. Click the Start Sharing button(.
2. Click the Start Sharing button after the share preparation has completed.

NOTE: To share your desktop, you must enter your web collaboration credentials in Preferences → Credentials, unless your service provider has automated provisioning in use. For more information, see section 13 Preferences. You can participate in desktop sharing sessions by another user even without having your own sharing credentials.

2.8 Active Communications

Active communications will appear at the top of the Contacts list in the main window when receiving voice communication. This area provides an easy view to see the people with whom you are communicating. By default, the call window is shown in the Active Communications area in the Main window (where the call can be fully controlled in the desktop client). It reduces the number of communications windows; however, a separate call window can still be opened using an Active Communications menu. The following is also available in this area:

- Double-click an active communication to bring this Communications window to focus if the call window is separately shown. If the call window is integrated, you can use a menu option to show it separately.
- See who has sent you a chat message, but only after you accept the chat session. Before the chat session is established, the chat items are not visible in active communications, but a history badge is visible.
- End a call.
- Mute the microphone.
- Place a call on hold.
- Merge two calls or transfer by dragging and dropping calls onto each other.
- Transfer a call.
- Make conference calls.
- See call recordings.
- Park and retrieve calls.
- Conference
- Call transfer
- Call park

When enabled, you can use the buttons for faster access to the services.

2.9 My Room

My Room is an always available and permanent room you can use to chat with anyone that joins.

You will be assigned a conference bridge in your room with IP Voice UNIFI. You and your attendees can click the Call or Video button to have IP Voice UNIFI automatically dial in to the conference and enter the appropriate entry codes.

If a conference bridge is not specified, you can initiate an N-way call in your room. IP Voice UNIFI dials out to all participants and takes everyone off hold after the last attendee answers.

You can invite others to your room by dragging and dropping them from the Contacts list into the My Room Communications window.

Others join your room by right clicking your name on their Contacts list and selecting Join Room

2.10 Select Audio Devices

If you have multiple audio devices available for your microphone or speakers, select the preferred audio device before starting a call.

- Windows and Mac
 1. Click the Gear Icon located on lower left corner of the application.
 2. Select *General*.
 3. Select *Audio/Video*.
 4. Set output device (speakers).
 5. Set input device (microphone).

3 Contacts

Contacts are the people with whom you communicate, and, in most cases, you see their presence and share your presence with them. There are three types of contacts:

- Contacts – Actual people with whom you communicate.
- Conferences – Audio or video conference bridges that you use to communicate with others. Silent dialing into the bridge also applies to these contacts if enabled by your service provider.
- Groups – Containers of contacts and/or conferences.

3.1 Add

When you sign in for the first time, there are no contacts on your contact list. Add a new contact at any time by selecting the Add Contact item from the menu or choose the Add Contact button from the main window.

In the Add Contact dialog box, enter the contact's information and then click Add Contact. By default, your presence information is always shared with a new contact if an Extensible Messaging and Presence Protocol (XMPP) address is provided.

If you are accepting contacts via a buddy request, you may see the contact card after accepting the buddy request, depending on the service provider settings.

However, you can always share your presence information later by selecting Subscribe on the menu for that contact on the contact list (right-click the contact or arrow button). Note that the

contact must accept your subscription request for you to establish the presence relationship successfully.

The newly added contact appears on your contact list.

Add a conference contact by clicking the same button you did for Add contact and choosing the Add conference menu option. A conference contact is a special contact used for conference bridges to avoid remembering PIN codes and conference number, for example, recurring conferences. Just create a contact for the weekly conference, add a conference bridge number and PIN, and join the conference just by right-clicking the contact or choosing it and clicking the Call button.

Choose the Add group menu option to add a new group to the contact list.

3.2 Edit

Edit a contact by selecting the contact first. After you select the contact, right-click anywhere in the area of the selected contact and a menu of options appears. This base principle is the same for normal contacts, conference contacts, and groups. Note that depending on your service provider settings all or no contact card fields may be editable. Depending on your service provider settings, you may also see a button for synchronizing the contact card with the Telephony directory or the synchronization may take place automatically. When the manual synchronization button (cloud icon) is visible, there is no automated syncing of the contact card details with server information. To synchronize the contact card data, click on the cloud icon.

- Unsubscribe removes the presence relationship between you and that contact. This means you do not see the contact's presence information and your contact does not see yours. To re-establish the presence relationship, select Subscribe. An unsubscribed contact remains on the contact list and is always shown without an icon. Any contact that is not presence-enabled is shown in the same way.
- Remove removes the contact from your contact list.
- View Profile opens the Contact Information dialog box where you can add, edit, or remove information. This works for both normal and conference contacts.
- For groups, choose the *Edit* menu option to rename a group.

3.3 Filters


You can filter contacts in two ways:









- Use the *filter* field to search by contact name. The contact list is filtered in real time as you type.
- Alternatively, use the filter menus available by right-clicking the *Contacts* icon in the left pane to display only specific types of contacts such as favorites or online contacts. You can also sort contacts based on first or last name or choose whether to display the contact's avatar and availability status in the contact list.

4 Presence

For each contact you have subscribed to, you can see their presence. Similarly, your contacts can see your presence on their contact list.

Presence means that your friends are able to see whether you are available to communicate, for example, "I'm busy" or "I'm available".

Icon	What it means
	The green presence icon indicates that the user is online and ready for communication.

	The yellow presence icon indicates that the user is online but has been idle or away from their computer for more than ten minutes.
	The red presence icon indicates that the user is busy and does not want to be disturbed.
	The grey presence icon indicates that the user is offline and the only available contact method is calling.
	The question mark indicates that a subscription is pending and the contact has not yet approved sharing their presence.
	This icon indicates that the contact is busy due to a call. This is an automated presence status.
	This icon indicates that the contact is busy due to a meeting. This is an automated presence status. The <i>Busy – In Call</i> status overrides the <i>Busy – In Meeting</i> status so this one is only seen if there is a meeting but no call.
	This icon indicates that the contact is only available on mobile IP Voice UNIFI
	This icon indicates that the contact is only available on a compatible desktop phone, not IP Voice UNIFI.

The avatar in this version is not completely in real time. The avatars are retrieved at login, when the contact is added, and when the contact comes online.

Double-click the avatar to change it. A File Explorer view opens.

If you see an error message at the top of the Main window "XMPP Unavailable", it means that the XMPP connectivity has been lost for chat and presence; however, you can still make calls. You should contact your service provider.

Have the Outlook calendar automatically change your presence to *Busy – In Meeting* by enabling this in the Preferences → General tab.

The presence update is only triggered by appointments and meetings that are either accepted by the user or made by them. All day meetings do not trigger a presence change to *Busy – In Meeting*.

The XMPP address of a contact cannot be changed. Instead, you must delete the old address and create a new one.

Location in presence is done based on the IP address that the machine is using. The IP address is mapped to a physical location. Change the location manually by clicking the avatar and then the location icon to go to the manual location and change the view.

5 Chat

5.1 Chat View

When you initiate a chat, the Chat window opens. Chatting with a contact is possible only when you are both online. If your contact initiates a chat, you see a pop-up notification in the bottom right-hand corner of the screen. If you close the Chat window and open it again, sent chat messages are shown in the window as chat history.

When the chat opens, you see the contact's information at the top of the screen.

At the top of the message area, there are five links: Yesterday, Last week, Last month, All history, and Delete history. From these links, you can load history from your local storage and different time frames.

In the text field, you can add emojis. Emojis can also be added by manually entering the corresponding characters that represent that particular emoticon. You can send text by pressing ENTER.

To enter a line break in the text field, you can use the following key commands:

- CTRL+ENTER (COMMAND+ENTER on Mac)
- SHIFT+ENTER
- ALT+ENTER

Use either one of the short commands, CTRL+C or CTRL+V, or right-click the selection for a menu to copy or paste the text to or from the Chat window.

5.2 File Transfer

File transfer functionality is accessible only through the Chat window.

1. To open the File Selection dialog box, click the Send File button on top of the text field.
2. Select the file to be sent from the dialog and then click Open. You can also drag and drop a file into the Chat window.
3. Once the file offer is issued and during its transfer, you can cancel the transfer (at any time) by clicking Cancel.
4. Accept an incoming file transfer by clicking the Accept button.
5. Reject the file transfer offer by clicking the Decline button.

After the file transfer has completed, the received files can be opened or viewed in the file manager by using the Click to open and Show in folder links.

5.3 Group Chat

Start a group chat by “multi-selecting” and right-clicking the main window contact list or through the Conference menu in the Communications window. More people can be added later to the chat by drag-and-drop or by using the Conference menu. Only the owner can add more participants.

A group chat works the same way as a one-to-one chat. All messages from anyone are sent to everyone else. All contacts need to be online to be able to participate in a group chat. You cannot invite an offline contact or a contact that is not on a device that supports group chat. This does not affect the group chat in any way.

A group chat history is saved and is available to view later in the Messages tab of the main window.

Only the newest chat room messages are stored on the server. One-to-one chat messages are only saved locally.

Deleting a chat room is not supported.



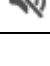
Chat rooms can be moderated by the owner. Use the right-click menu options to remove a participant from your chat room. If needed, the removed participant can join later. The removal also applies to desktop share sessions.

5.4 Chat Recording

Chats can also be recorded as a service provider option; in this case, the client shows a recording indicator. Note that there are no end-user controls for chat recording.

6 Audio and Video Calls

The following table describes additional Communications window icons and explains what you can do with them, for voice and video calls.

Icon	What you can do
	Enter additional digits using the dial pad at any time during the call (for example, to insert a conference number). The dial pad is movable and can be dragged around the <i>Video Call</i> screen to a location you set.
	Mute your microphone by clicking the mute icon.
	Adjust the volume bar to adjust the volume. Dragging it all the way to the left mutes your speakers. This is shown by a small red cross in front of the volume bar.

When receiving voice communications, there are the following options:

- Transfer a call to a third party.
- Put the call on hold. Note that if you hold the call, the other party cannot “un-hold”. This freezes a video call to the last frame of the video feed. In both voice and video calls, this is communicated to all parties by a notification appearing in the middle of the screen.
- Hide your own video.
- Add participants to the call.

Dial a number in the combined *Search and Dial* field to make a call. Once you type your numbers, IP Voice UNIFI searches for contacts on both the local contact list and the enterprise directory.

You can also call circuit-switched network numbers such as Global System for Mobile Communications (GSM).

Choose your video size within settings and *Audio/Video settings*. Your selection is used by default for future video calls. The available sizes are automatically presented based on your camera. The selected video size can be modified automatically depending on your CPU load and changing network conditions to optimize the video quality.

6.1 Call from Computer

Select a contact from your contact list to start communication and click the desired communication button. Type a phone number in the *Search and Dial* field at the top of IP Voice UNIFI window (search or communicate), to communicate with someone who is not on your contact list.

6.2 Call from Phone

The second option to communicate in the row of communication buttons is the Call from Phone. When you click this button, the desk phone instantly starts ringing and the call is established from your desk phone. This depends on your service provider configuration as other devices may also ring.

For remote calls initiated using IP Voice UNIFI, you can also have mid-call controls such as hold/resume, transfer, and add participant.

Automatic *Busy – In Call* presence also works with the Call from Phone feature.

6.3 Answer Call

When someone is calling you, you see a pop-up notification on your screen. You can choose to answer, silence the incoming call, and then open a chat session with the caller, reject the call, or silence the incoming call by closing the popup notification window. If you silence the call, the ringtone is silenced but the caller does not see anything on their end. You can answer or reject the call after silencing it only if you have chosen the chat option. If you close the incoming call pop-up notification to silence an incoming call, then you do not have an option to answer or reject it any more. When choosing the chat option, chat is only enabled after the call has been answered or rejected.

If you reject the call, it causes the line to sound busy at the caller's end and they know that you rejected the call.

When someone is calling you with a video, you see the same pop-up notification; however, the options are answer with video, answer as voice only, silence and chat, reject, or silence (by closing the popup window). If you decide to answer as voice only, the call is voice only.

6.4 Contact Name Lookup for Incoming Calls

Whenever the incoming call does not have a calling name associated with it, IP Voice UNIFI can perform a local contact search. If the number matches one of the contacts on the IP Voice UNIFI contact list, the name is shown on the incoming call screen along with the alert.

Whenever you retrieve your call logs/history and the call log does not have a calling name associated with it, IP Voice UNIFI does a lookup in the local contacts and populates the name if a match is found.

6.5 Missed Call or Communication

When you have one or more missed calls or other types of communications, there is a notification on the left-hand side of the navigation pane in the main window. Clicking the icon takes you to the missed communication in the Communications History view.

6.6 Full Screen in Video Call

Full screen mode can be activated by clicking the Full Screen button or by double-clicking anywhere on a video.

Exiting full screen mode is done by pressing the ESC key or the Windows button. Exiting full screen makes the video call go back to its original state (even if there was resizing of the window previously before going full screen).

In a full-size window, you can see a similar Options menu at the top. It has the same functionality as it does in the normal view. When you move the mouse, the top bar and lower communication buttons appear on top of the video.

6.7 Multiparty Sessions

You can have many participants in a call, either in a *My Room* or in an ad hoc multiparty call. Add more participants by dragging and dropping them on to the *Communications* window or by selecting the Conference menu item via the *Communications* window menu button. By choosing the menu item, you can also add participants with just a telephone number.

In contrast to using *My Room*, which uses your permanent chat and collaboration rooms and conference bridge, you can start ad hoc multiparty sessions by either selecting multiple contacts on the contact list and starting a chat, by calling with them, or by expanding a one-to-one session into a multiparty session by dragging and dropping a contact into the *Communications* window. In an ad hoc session, the room used is a temporary one that is deleted once the session ends (that is, when the last participant leaves). Voice conferencing does not use a bridge but instead uses the N-Way Calling supplementary service in a sequential fashion.

If the XMPP service is not available, then ad hoc multi-party calls are not available.

6.8 Call Waiting

You can have one active call at any one time if you receive a new incoming call and accept it. The existing call is put on hold and you can change between these two calls by using the Hold and Unhold buttons.

6.9 Call Transfer

Blind call transfer is available in the *Communications* window; choose the Transfer Call menu item to transfer the call to someone else. Attended call transfer is also available in the same window, first call someone to check if the called party can take the incoming call and then transfer the incoming call to the desired called party. You can also search for the transferred to party.

6.10 Message Waiting Indication and Voice Mail

The Message Waiting Indication (MWI) service allows you to receive a notification for a waiting voice mail or video mail. By clicking on the message icon in the upper right-hand corner of the main window, IP Voice UNIFI calls the predefined mailbox number to allow the user to listen to the voice mail or view the video mail.

It is also possible to call voice mail from the dialer by long pressing the “1” icon in the dialer.

Missed calls are indicated by an icon in the main window. Missed video and audio calls are indicated with a different icon. Note that the MWI icon is in the same place when it indicates a new voice mail.

6.11 Call Park and Retrieve

Call Park is particularly suited for shared environments where one person can answer the call, park it, do something else for a while and continue the call from another device or let somebody else continue the call.

Transfer an ongoing IP Voice call to a Call Park server and then retrieve it when needed. An ongoing call can be parked against your own number or another number (an extension). Call Retrieval works in the same way, the parked call can be retrieved from your own number (an extension) or another number (an extension) to provide flexibility for who is picking up the parked call.

A parked call is visible on your desktop in the active communications area so that you can easily retrieve it, but only for the duration of the Call Park announcement. After the announcement is over, the parked call disappears from the active communications area (since the triggering call is disconnected). After the call disappears from the active communications, the user has to remember the extension to which the call has been parked to retrieve it using the main window menu (or feature access code), unless the call was parked to the one’s “own” extension. If the call is not retrieved after a certain time, then the server calls the parking user.

6.12 Call Pull

Call Pull allows you to pull an ongoing call from one of your devices to another one where the Call Pull feature is used. Call Pull can also be used with feature access codes (FAC), in this case, *11. User interface support has been added to the desktop so that an end user does not have to remember feature access codes.

6.13 Forced Logout

Depending on your service provider settings, you may see a popup saying that you have been logged out due to another instance of the client logging in. This feature allows C Spire™ to track similar online client instances and only allow one of them to be online at the same time. When

C Spire™ notifies the client to log out, all connections are terminated and client returns to the login window.

6.14 Echo (test) Service

Use this *Main* window menu option to make a test call to verify voice and video quality. The echo service asks you to record a message and plays that message back immediately before hanging up. The echo service may be available in different languages depending on your service provider settings.

6.15 Headset Support

You can control incoming and ongoing calls from a compatible headset. The feature set supported is answer/hang up as well as mute/unmute and volume up/down. The following Plantronics headsets have been tested, although other Plantronics devices should also work:

- Voyager Pro UC
- Savi 700 series
- Blackwire C3xx, C4xx, C5xx, and C7xx
- Calisto 620
- Audio 628USB
- Plantronics Voyager Edge UC
- Plantronics Savi 700 series
- Plantronics Blackwire C3xx, C4xx, C5xx, and C7xx
- Plantronics Calisto 620
- Plantronics Voyager Legend UC
- Logitech H570e Mono
- Logitech BCC950
- Logitech Conference Cam Connect
- Jabra Biz 2300/2400
- Jabra Speak 510
- Jabra Pro 930 (wireless)
- Sennheiser SC 230/260
- Sennheiser SP 20
- Sennheiser MB Pro1 UC

7 Desktop Share

To share your desktop or individual application:

- 1) In the Communications tab, click the Start Share button. This does not yet start the “share”.
- 2) Select either to share your entire display or one of your open applications and click Start Sharing.

The share widget appears to let you control share settings such as Preview that shows you what participants are seeing and Pause that pauses sharing.

- 3) To stop sharing, click the Stop icon. While sharing, all other communications mechanisms are also available except for video calling and file transfer. Participants cannot hide a share without closing the Communications window. Video call is also available while sharing.

Desktop sharing works the same way in both My Room and in ad hoc sessions. For participants without UNIFI, use the separate Desktop Share Invitation link, if available, by right-clicking the My Room button. Share selector is not dynamically updated while the selector is open and minimized applications are not available in the list of applications to share.

As a participant, you can also zoom in and out during the share. As the share owner, incoming message toasters are suppressed during share, but the missed message badge is incremented and the incoming message sound is played when enabled.

If you are first in a video call and then start share, your own video is not shown due to limited space available, but you can make it visible using the Main window menu in the bottom right-hand corner by selecting “Show Own Video”.

If you are using dual monitors, you can choose which monitor to share. You can check the primary monitor in the operating system settings.

You can also remove desktop share participants. They are also removed from the group chat at the same time. If needed, the removed participants can join later.

Depending on your service provider settings, you may have to provide desktop share credentials manually.

In addition, participants can share when enabled by the service provider by clicking on the Share button; however, the room owner can prevent this at any time. Only one person can share at any one time in a session. Only one share at a time is supported if you have sessions with many users at the same time. Share passing is only supported in My Room.

Participants do not have to take any action to accept the share invitation. It is automatically accepted. The same also applies to share passing. That is, the owner does not have to take action for the participant to start sharing.

When video and share are used at the same time, the different views cannot be resized. Instead, the primary view can be selected from the bottom of the window via thumbnails.

In deployments using the older web collaboration solution, clicking the Share button opens an external browser window where share can be viewed.

8 My Room

My Room is started by clicking on the My Room icon on the top right-hand side of the Main window. My Room is started automatically using your permanent chat room. Add more participants by dragging and dropping them into the Communications tab or the Conference menu. Otherwise, they can join your room by right-clicking your name on their contact list and choosing the Join Room menu option. Once people have joined the chat room, they can click on the Call button of that window to join the conference. The room owner can also share their desktop.

To use the full functionality of My Room (desktop sharing, conferencing, and chat combined), you may have to manually enter your desktop sharing credentials, your conferencing number, and your PIN in the Preferences → Credentials window. This depends on your service provider settings.

In addition to the owner of the room, participants can also share the desktop but only the owner can add more participants. This applies to both My Room and ad hoc sessions.

- 4) To see a Context menu, right-click the Options icon (three dots) on the right-hand side of the My Room tab for Room Info.

- 5) To modify credentials and conference bridge information, select Configure to go to the preferences. If your service provider has automatic provisioning enabled, then this menu item is not present.
- 6) Select Copy Guest Link to copy an invitation link to the operating system clipboard (depending on your service provider setup, this menu option may not be available). Paste this link, for instance, to a meeting invitation email to allow UNIFI participants to join the conference in one click from, for example, Outlook, or Office applications. Note that some applications may not recognize the UNIFI (btbc:) link. You can also copy the My Room Invitation to the default email client (this text does not contain the UNIFI link) and go to the My Room preferences via a right-click menu option.

The link has two parts: one for UNIFI users and another one for users with some other client. Depending on your service provider settings, the invitation can also contain a link to the desktop sharing session. The invitation always contains a dial-in number and PIN for users who do not have UNIFI. The desktop share link, when available, allows anyone to join a desktop share session from a standard web browser. In addition, the UNIFI group chat session is supported with the web collaboration session. For guest user links, see the next section.

The My Room info area indicates the conference bridge details of your My Room. You can also export the attendee list using the related participant menu available via the options icon (three dots).

The Communications window also has an icon that provides the same Context menu previously discussed.

Desktop sharing works the same way for both My Room and the ad hoc sessions.

My Room uses your permanent chat room, permanent collaboration room, and conference bridge (audio or video). My Room is the only way to use the permanent rooms. Any other multiparty communications, such as selecting multiple contacts, and right-clicking for a conference call, or dragging and dropping for a one-to-one chat, is done using ad hoc rooms. Ad hoc rooms are deleted once the session is over.

All My Room sessions start as chats but call and/or share can be added to the session while in progress. File transfer and video conferencing are not supported in My Room or ad hoc sessions.

9 Search

IP Voice UNIFI supports a search of the enterprise directory. This takes place in the same search field that is used for both a local and presence-enabled contact list search.

IP Voice UNIFI automatically searches the local contacts and presence-enabled contact list in addition to the enterprise directory at the same time. As soon as there are results from the enterprise directory, these results are shown on a separate list in the main window. Additionally, there may be other search result groups from other search sources such as Lightweight Directory Access Protocol (LDAP) or Outlook.

Search results are displayed differently depending on the results of the contact list and directory search:

- If LDAP search (Corporate directory) or Outlook search are enabled, there are more result groups.
- If there are no results for a certain search source (local contacts, Outlook, LDAP, or IP Voice telephony directory) that group is different in the user interface (UI).

The enterprise directory searches all available fields for the search string. By default, it waits for 1.5 seconds before it sends the search request to the server to minimize unnecessary load on the server.

Typically when adding a contact using directory search results, there are phone numbers and first names in addition to last names available. In addition, the Extensible Messaging and Presence Protocol (XMPP) address and other fields are imported when found to allow presence and chat.

Outlook integration (search and calendar integration) on Windows requires one of the following versions installed on the desktop:

- Outlook 2007
- Outlook 2010
- Outlook 2013

Outlook search also works when several Outlook accounts are in use, but only one account is used at a time (default selected, which can be changed in Outlook). Additionally, other related considerations are as follows:

- The client searches for contacts and calendar entries in the default Outlook account. The account is set to the default via File → Info (left pane) → Account Settings → Account Settings → Data Files. Select an account and mark it as “Set as Default”. After making this change, sign out and sign back in to the client and it now searches that account for contacts and calendar entries.
- The client searches the Outlook contacts only on the local machine (that is, the Outlook Address Book). There is no Exchange server lookup performed. In addition, all directories in Outlook are searched for contacts, even deleted folders. The Contacts directory can also have multiple levels of subfolders.

Every minute, IP Voice UNIFI reads Outlook appointments. If there is an appointment running at the current time, then the presence is shown as *Busy – In Meeting*. Overlapping appointments are also handled. Following are some examples of IP Voice UNIFI operation with Outlook when time is 9:10 A.M.

- There is meeting “A” 9 A.M. through 10 A.M. Presence is shown as *Busy – In Meeting*.
- Presence is explicitly changed to *Available* at 9:15 A.M. Presence is shown as *Available*.
- In the next minute, IP Voice UNIFI again reads the appointments and sees that “A” meeting is running; however, the presence was already explicitly marked as *Available* and presence is not shown as *Busy – In Meeting* but *Available*.
- There is an overlapping meeting “B” 9:30 A.M. through 10:30 A.M. Presence is shown as *Busy – In Meeting* when the time is 9:30 A.M.

When deleting a meeting that is currently ongoing in Outlook, the presence status remains as *Busy – In Meeting* until the next time Outlook appointments are checked (once every minute) and after that, presence is shown as *Available*. This change may be instantaneous or it may take a minute depending on how close the timer is to being triggered.

The Outlook Object Security model was introduced in Outlook 2007. It has been tested with Outlook 2010 and Outlook 2007. For Outlook versions prior to 2007, the *Allow/Deny* pop-up window seen in previous releases should not be triggered. However, those versions are not officially supported. For Outlook 2013, the behavior should be similar to 2007 and 2010, meaning the popup should not come up with Outlook 2007, 2010, and 2013 in Release 20.0.0 and onwards. However, more tests are needed for this before official support for Outlook 2013 can be declared.

The presence update is only triggered by appointments and meetings that are either accepted by the user or made by them. All-day meetings do not trigger a presence change to *Busy – In Meeting*.

10 Full Enterprise Directory

IP Voice UNIFI allows for the browsing of an entire C Spire™ IP Voice enterprise directory.

To view the IP Voice enterprise directory, click the Directory button on the left-hand side of the navigation pane (if available). This feature depends on the service provider configuration so it may not be visible in all clients.

11 Communications History

The second icon from the top in the main window on the left-hand side of the navigation pane displays your messaging history. Double-clicking a conversation on the list opens it in a new window.

IP Voice UNIFI saves a call history for placed, received, and missed calls. The call history makes it easy for you to redial and call back when you have missed a call or you want to easily dial a contact with whom you have recently spoken.

Double-click on a name in the list to call back directly (this calls back the same way you previously spoke, for example, if you were in a video call, double-clicking starts a new video call). Double-clicking an incoming call item from presence-enabled contacts opens a chat window, from which a call can also be made.

To clear the missed chat indicator, you need to open the missed chat.

The *Communication History* missed communications badges can be cleared by using the right-click menu from the Communication History button on left-pane. The menu provides options to clear “All missed”, “Clear missed chats”, and “Clear missed calls”.

12 Security Classification

IP Voice UNIFI supports security classifications, which are typically used in government deployments where users are divided into security clearance categories. The security classification is displayed based on the security classification of all session participants. The security classification is displayed in chat as well as audio and video calls. Security classification has to be set by your service provider; the client checks the assigned security classification at login.

For calls, the security classification can be changed during a call by a user and it works with supplementary services such as Call Transfer and Conference.

For chat, the security classification is displayed but cannot be changed.

13 Preferences

Preferences provide access to available settings for IP Voice UNIFI. Follow these steps to access Preferences.

- Windows
 1. Click the IP Voice UNIFI logo in the main window title bar.
 2. Select Preferences.

- Mac
 1. Select IP Voice UNIFI from the main menu.
 2. Select Preferences.

13.1 Credentials

My Room

Specify the conference details to be used for your My Room. If your service provider has automatic provisioning enabled, then you cannot change these details.

Web Collaboration

Web collaboration credentials may need to be manually entered and can be viewed and edited. If automatic provisioning is enabled, then you cannot change these details.

Protocols

If protocols such as XMPP or Xsi are available to be viewed, they appear here.

Device Management

If the Device Management configuration URL is available to be viewed, it appears here.

13.2 General

Language

Select your language then click OK or Apply, and the change takes effect immediately. Note that the number of languages depends on your service provider.

Log In

Enable or disable automatic sign-in when starting the application.

Confirmations

Usually there is a confirmation pop-up notification each time you remove a contact or call history record. By selecting one or all of the check boxes, you disable the confirmations when deleting information. Here you can also control whether there always is a pop-up notification for publishing location information. Typically, this is shown at login.

Logging

Logging is used for troubleshooting. You may be asked by your service provider to turn on logging and then send a log file directory.

13.3 Audio

Output Device (Speakers)

Choose a headset, PC-integrated speakers, or external speakers for audio output. Your external playback device is selected by default (if you have one connected).

Voice Recording (Microphone)

Choose a headset microphone, PC-integrated microphone, or external microphone for voice during calls. Your external recording device is selected by default (if you have one connected). You can also choose automatic gain control and test your recording device.

Alert Signal

Select the audio device and ring signal that is played when you receive an incoming call. The same signal is used for both voice and video calls. You can also select your own ring signal.

Sounds

Select which events cause a notification sound. To disable the sound, uncheck the check box. Select a sound event and then click Play to hear the sound.

13.4 Video

Capture Device

Select a camera that you want to use for video calls. Your external web cam is selected by default (if you have one connected).

Video Size

Select one of the available sizes. Note, however, that higher sizes require more bandwidth and a more capable central processing unit (CPU).

13.5 Proxy

Proxy Settings

Select how to handle HTTP proxies. By default, the system settings are used but you can also choose not to use an HTTP proxy or to use the IP Voice UNIFI (client) proxy settings.

14 Call Settings

IP Voice UNIFI supports the following service management features allowing supplementary services to be managed using the native IP Voice UNIFI Call Settings window:

- Anywhere Number
- Remote Office
- Call Forwarding
- Do Not Disturb
- Simultaneous Ring Personal

You can also use the call settings with a Main Window on the top of the window, if this feature is enabled. When enabled, this feature allows Anywhere Number, Do Not Disturb, Remote Office, and Call Forwarding to be managed in the Main Window using single clicks or right clicks.

14.1 Anywhere Number

Anywhere Number allows service providers to offer fixed-mobile convergence (FMC) services today without additional equipment.

Anywhere Number simplifies communications for on-the-go users and remote users by extending the features of a desk phone to any other fixed or mobile device, regardless of the network or handset manufacturer. Callers dial one number and can reach you on any phone the user chooses. A desk phone, cell phone, and/or a soft phone may ring simultaneously.

Enjoy voice call continuity with the ability to move live calls from one device to another without hanging up.

Add locations (numbers) that can be used in the service via the Add New Location button. Use the Alert all locations simultaneously check box to activate parallel ringing.

The Diversion inhibitor check box prevents a call ending up as a voice mail, which can be problematic in, for example, conference call situations.

Select Answer Confirmation to receive a separate audio prompt when answering a call from that number (location). It may be useful in cases where, for example, mobile numbers are being used to prevent incoming calls going to mobile voice mail since the call will be ended without going to voice mail if the answer confirmation is not provided.

Select the Call Control check box to enable the server platform to provide mid-call services such as Call Transfer and Conferencing for that number (location).

14.2 Remote Office

This service allows the use of any phone as the office phone from a charging and numbering perspective. For instance, a hotel room phone can be used as the office phone.

Enable Remote Office by clicking the Edit icon and specifying a phone number to be used as the Remote Office number.

14.3 Forward Calls

Enter a number to which your calls should be forwarded. Different variants of call forwarding are supported, such as forwarding always, forwarding when busy, and forwarding when you cannot answer or when you are unreachable.

14.4 Do Not Disturb

When you activate this service, all calls are typically blocked by the server and sent to voice mail. Enable this service by clicking the Enable check box.

14.5 Simultaneous Ring Personal

Add up to ten additional numbers or Session Initiation Protocol Uniform Resource Identifier (SIP-URI) addresses that you would like to ring in addition to your primary number when you receive a call. In addition, specify whether you want answer confirmations. This service is an older variant of Anywhere Number.

15 Sign Out

Signing out of IP Voice UNIFI sets your status to “Offline” for your contacts and displays the Sign In screen.

15.1 Sign Out of IP Voice UNIFI

To sign out, follow these steps.

- Windows
 1. Click the IP Voice UNIFI logo in the main window title bar.
 2. Select Sign Out.
- OS X
 1. Select Actions from the main menu.
 2. Select Sign Out.

15.2 Exit Application

To exit the application completely, follow these steps.

- Windows and OS X
 1. Close the Sign In window.
- Windows
 1. Select the IP Voice UNIFI logo in the main window title bar.
 2. Click Exit.
- OS X
 1. Select IP Voice UNIFI from the main menu.
 2. Select Quit IP Voice UNIFI.

NOTE: Closing the main window (not the Sign In window) does not exit the application but rather minimizes the application to the system tray (Dock). This allows you to continue to receive calls and messages without having the Contact List window appearing on the desktop.

16 Multi-Device Support

IP Voice UNIFI supports users with multiple devices, according to the XMPP specifications. This is comprised of several features:

- Chat invitations sent to a user are received in all devices. Before the session is accepted, messages are sent to all devices and once answered, the chat messages go to the device that has sent a reply message.
- One can retrieve one’s own presence notifications when another client updates the user’s presence. The client stores this information and updates its own presence so that it is the same as the higher priority status it received, (that is, when the received status update is manual). If the received presence update is not manual, it does not react to the received update; it only notes it.
- Accepting a sharing presence invitation in one client is also recognized by another client, and both clients start receiving presence updates.
- A new presence subscription made in one client is recognized in another. If the contact blocks the “invitation”, there are presence notifications from the server to all of the user’s clients that indicate that the subscription was terminated and this information is shown to the user. If the client receives two presence authorization requests from two or more devices for the same user, it only shows one request to the user.

- Removing a contact from the contact list in one device is recognized in another client and the contact list is updated (that is, the contact is removed) in the other client as well.

If a user has many devices, each device has the same status when shown to the end user. In addition, the contacts on the contact list always see the same status with updates shown in the following priority order:

- Busy
- Online
- Away
- Offline

This means, for example, that if one client publishes a *Busy* status and another client publishes another status, contacts see the user as *Busy*. Compatible devices such as desk phones are able to show presence in the same way.

17 System Requirements

System requirements are as follows:

- Operating system: Mac OS 10.6 Snow Leopard, Mac OS 10.7 Lion, Mac OS 10.8 Mountain Lion, Mac OS 10.9 Mavericks, Windows Vista, Windows 7, or Windows 8/8.1 (Classical view only).
- The installation footprint is approximately 125 megabytes (MB).
- For voice calls, a sound card, speakers, and a microphone or a headset are required.
- For video calls, a web cam is required.
- A minimum 1 GB random access memory (RAM) is required.
- Minimum 1 gigahertz (GHz); however, 1.5 GHz is recommended, Pentium 4 at a minimum, dual core CPU is recommended for video calls at a minimum.
- Open Graphics Library (OpenGL) 1.5 or higher is recommended.

For high-definition (HD) video, the following is recommended:

- HD camera
- HD resolution support in display
- Pentium Quad Core or equivalent
- 2 GB RAM

18 Appendix A: Keyboard Shortcuts for Desktop

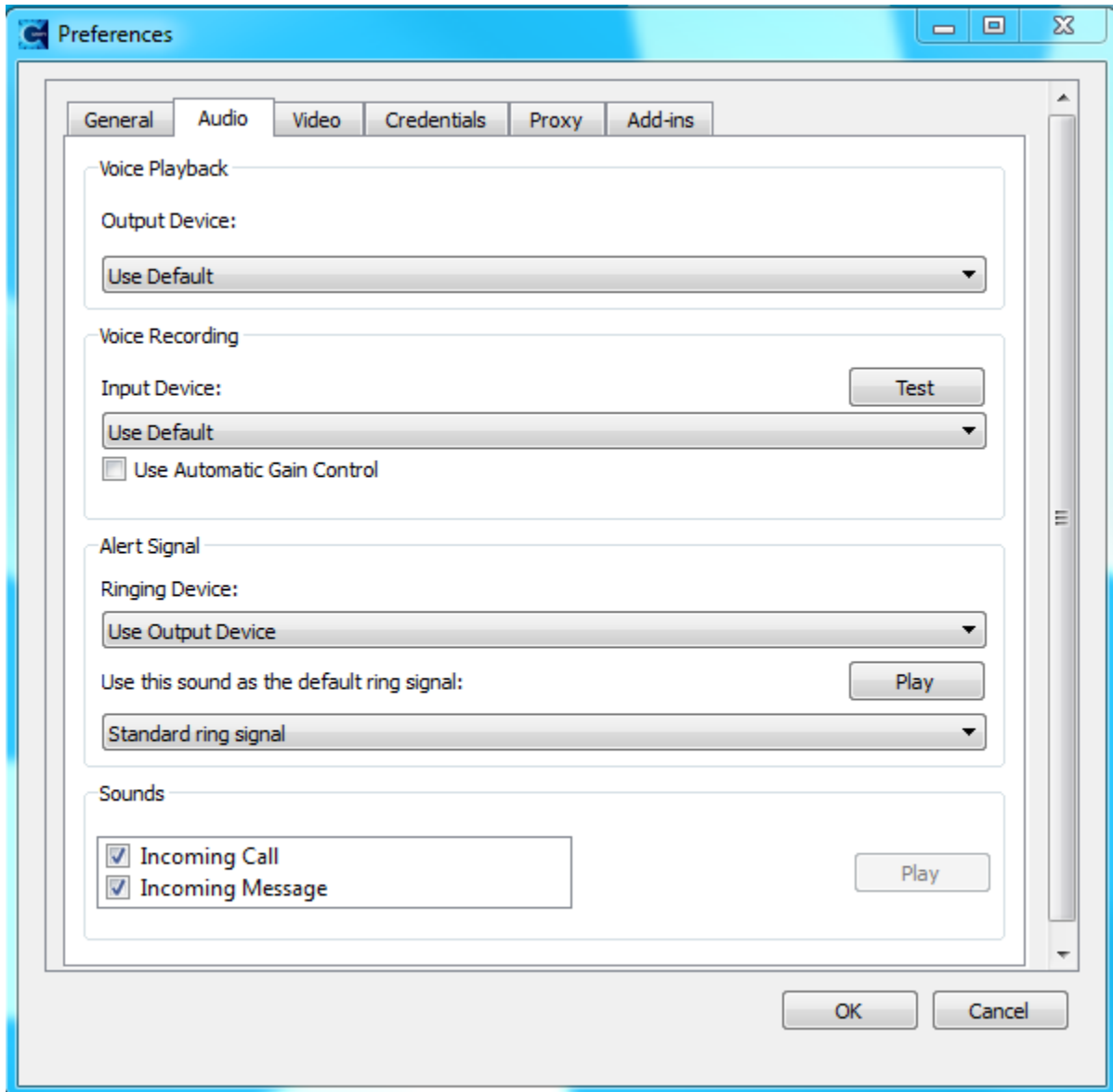
The following table lists the currently supported keyboard shortcuts. You can use these keyboard shortcuts to quickly perform frequently used actions.

Shortcuts for Windows	Shortcuts for Mac	What it does
-	Cmd-Q	This quits the applications.
CTRL+F4	Cmd-W	This closes the selected window (except for a contact card and the <i>About</i> windows.)
CTRL+C	Cmd-C	This copies selected text from IP Voice UNIFI to the clipboard.
Enter	Enter	When in the Communications window, this sends a chat message (if the <i>Chat</i> view is visible) When in the contact list, this opens a chat with the selected contact. When in the <i>Communications History</i> , this opens a communications session with the contact or address related to the selected item. This opens a chat if the item was chat and a call if the item was a call.
-	Cmd-,	This opens <i>Preferences</i> .
F1	Cmd-?	This opens <i>Help</i> .
CTRL+A	Cmd-A	This selects all text in the <i>Chat</i> view.

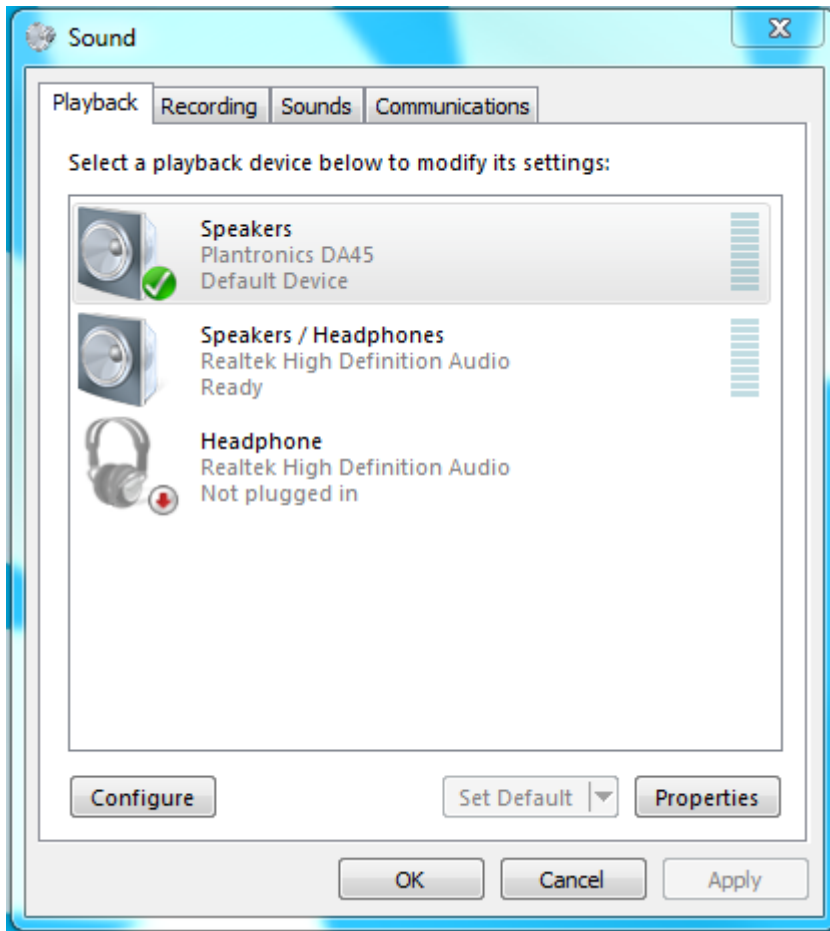
19 Appendix B: Configure USB Headsets

This section describes the steps necessary to properly configure USB devices to function with IP Voice UNIFI. These configuration steps currently apply to Plantronics headsets and Polycom U300 USB telephones running in the Windows platform only.

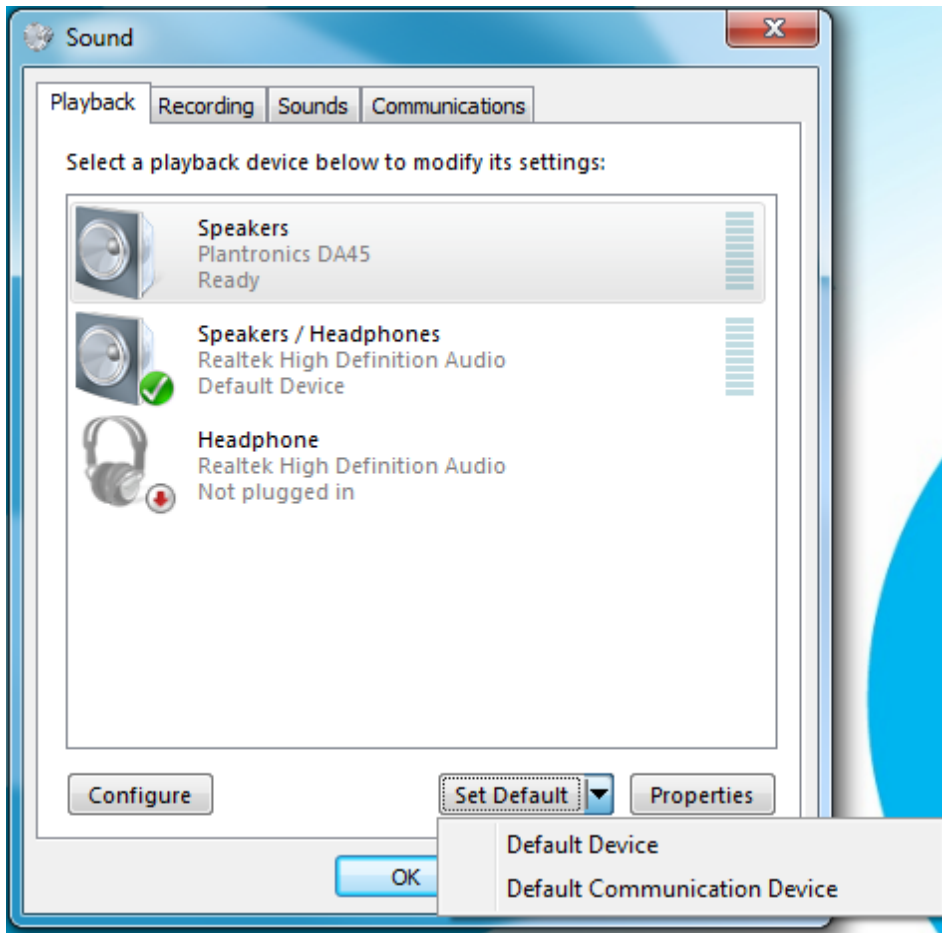
First, make sure that “Use Default” is selected in the *Audio* tab of IP Voice UNIFI *Preferences* for both input and output devices.



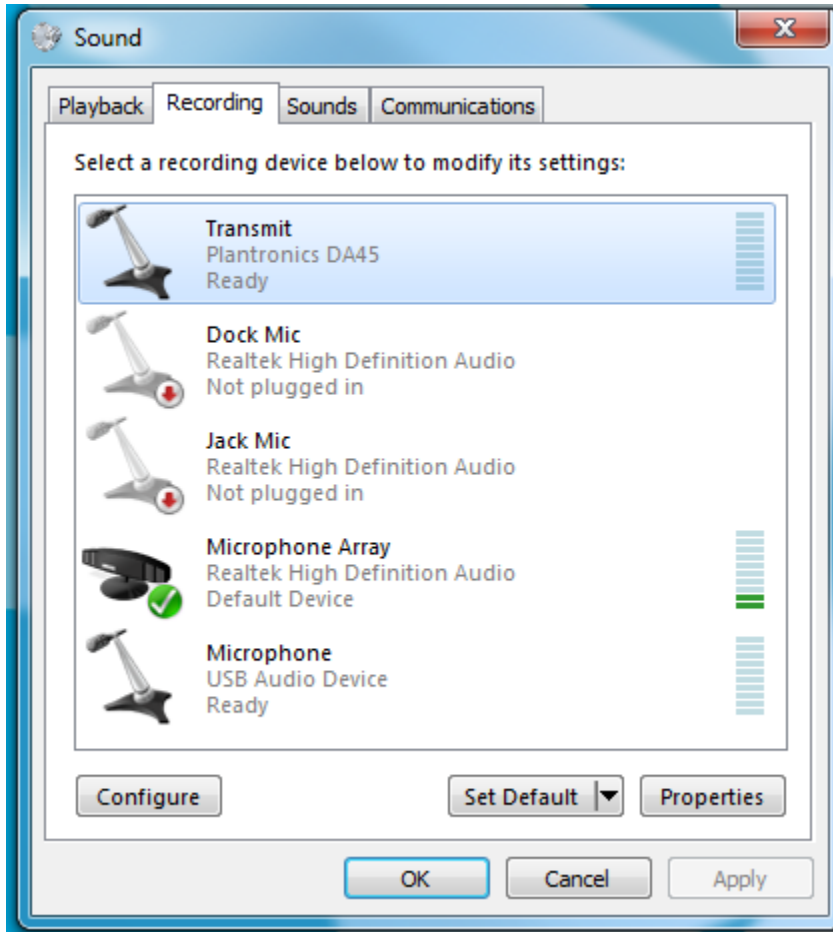
Next, make sure that the Sound settings in Windows pertaining to “Recording” and “Playback” devices are correctly configured. From the Sound applet, select the Playback tab.



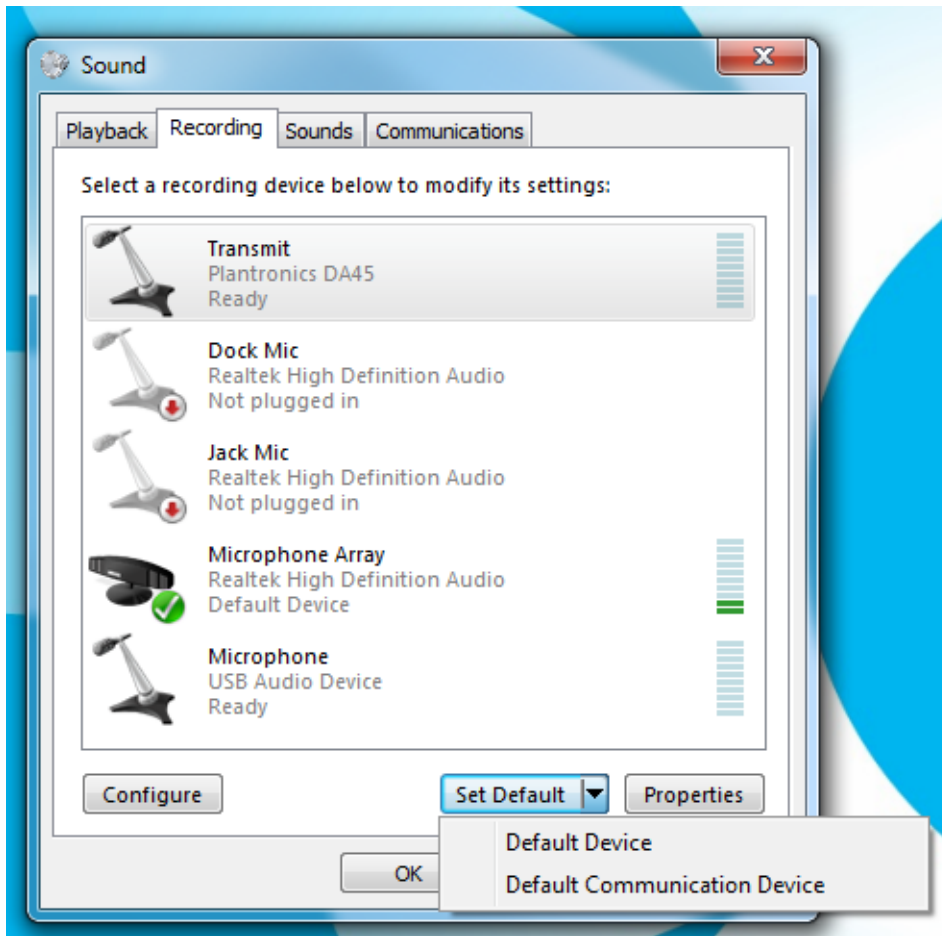
Click Speakers Plantronics DA45 to highlight the device and click on the drop-down arrow next to the Set Default button. Select *Default Communication Device* and *Default Device*.



Next, select the Recording tab.



Again, click on *Transmit*, which represents the connected Plantronics DA45 device, and click on the drop-down arrow next to the Set Default button.



Click OK to save the changes. The Sound window is dismissed and your device is now ready to be used by IP Voice UNIFI.

