

C Spire Wireless Samsung Showcase™ Software Update

Samsung has released a software update for the C Spire Wireless Samsung Showcase™ SCH-I500 which is recommended to be installed. This software will update your C Spire Wireless Samsung Showcase to software version SCH-I500.FE29. Please follow the instructions below to download and install SimpleDL tool using your Windows PC.

This Update Is Only Valid For The C Spire Wireless Samsung Showcase SCH-I500.

It Is Incompatible With All Other Models.

Requirements

COMPUTER

- Desktop/Laptop Computer Running Either Microsoft Windows 7, Vista, or XP
- All Firewall & Anti-Virus Programs Should Be Disabled
- Administrative Privileges Required To Download & Install Software Including Drivers
- An Available USB Port On The PC That Supports USB 2.0

MOBILE DEVICE

- **Important:** Fully charge the battery before updating your mobile device

OTHER

- USB Data Cable (Included In Retail Box)
- Available USB Port.
 - Direct connection of the USB cable to the computer's USB port is strongly advised. The use of a USB hub or docking station is NOT recommended.
- Your PC must be connected to a live internet connection to download the SimpleDL tool

Back Up Your Information Before Software Update

Important: This update was designed to simply update the operating system of the device while leaving certain types of user data intact. This user data includes pictures, videos, messages and contacts. Certain settings, such as wallpaper and ringtone assignments, may be reset back to factory default. To be safe, it is best practice to always back up all data and assume that everything will be lost.

Below you will find options to backup contacts, messages and help to reinstall third party applications.

Note: When you sync to your Google Gmail and Corporate Mail accounts, you are backing up your information.

Google Gmail and Corporate Mail information on your device including contacts are stored remotely on the Google

and Microsoft Exchange server.

Contacts

- Save Contacts to SD Card

Export to SD Card

1. From the Home screen, touch Contacts > Menu.
2. Touch Import/Export or More > Import/Export, then touch Export to SD card.
3. Confirm export by selecting OK.

Import to SD Card

1. From the Home screen, touch Contacts > Menu.
2. Touch Import/Export, then touch Import from SD card.
3. Confirm export by selecting OK.

- Google Gmail

1. From the Home screen, press the Menu button > Settings > Accounts & Sync.
2. Touch your Google account to display the Data & synchronization screen.
3. To sync your Gmail, Calendar or Contacts, touch the setting to enable synchronization, a check mark appears in the check box.
4. Press the Menu button > Sync now.

- Corporate (Exchange) Mail

1. From the Home screen, press the Menu button > Settings > Accounts & Sync.
2. Touch your Corporate Mail account to display the Data & synchronization screen.
3. To sync your Email, Calendar or Contacts, touch the setting to enable synchronization, a check mark appears in the check box.
4. Press the Menu button > Sync now.

Text Messages

- To save important text messages, you can forward it to an email address.
 1. From the Home screen, touch Messaging.
 2. Select text message that you want to save.
 3. Press and hold the text message. You will see a menu for Message options, which allows you to Forward the selected text message.

Applications

- Any installed applications downloaded from the Android market may need to be re-installed. To re-download paid

applications follow the steps below:

1. From the Home screen, touch Applications > Market > Menu > My Apps.
2. If prompted, sign in with your Google account credentials.
3. Paid applications will populate in the list shown.

- To re-download Free applications you can visit market.android.com and log-in with your Google account information. All previously downloaded applications are listed in My Library.

Check The Current SW Version

Based on the software version you are upgrading from, the update will perform different procedures and will required multiple mobile device reboots.

To find the software version:

1. From the Home screen, touch Menu > Settings > About phone.
 - Build number SCH-I500.DJ20 Eclair (Android 2.1)
 - Build number SCH-I500.EE25 Froyo (Android 2.2)
 - Build number SCH-I500.EI20 Gingerbread (Android 2.3.5)

Step 1: Obtaining Simple Upgrade Tool

1. To obtain a copy of the Simple Upgrade Tool, click the download button below.


DOWNLOAD

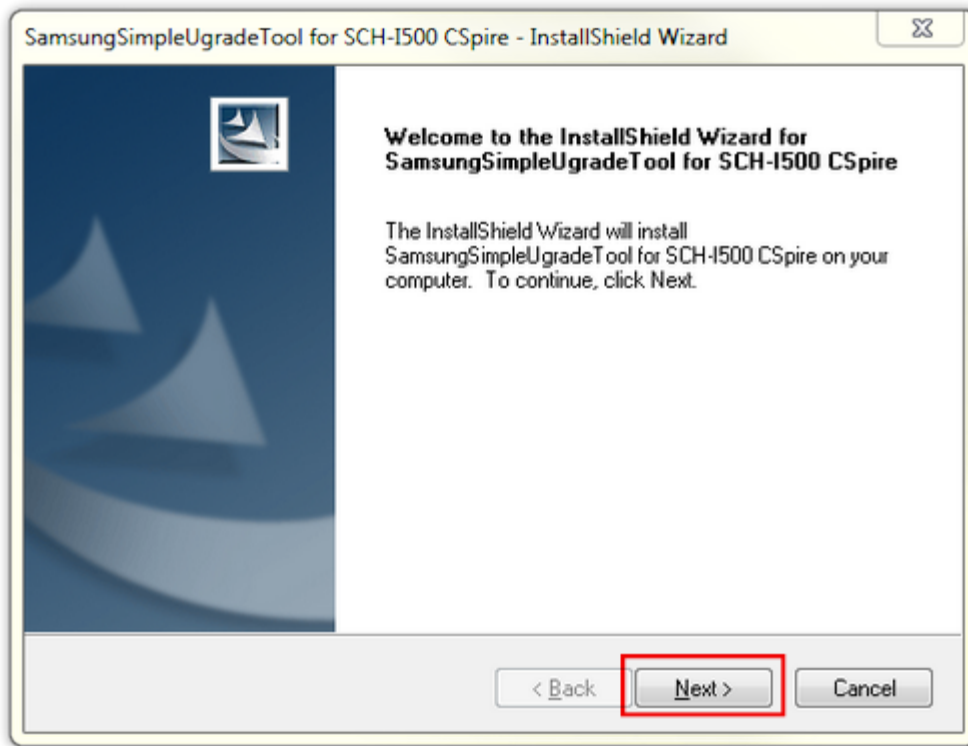
2. Save the file to a specified location. We recommend Desktop for easy access.

Step 2: Installing Simple Upgrade Tool

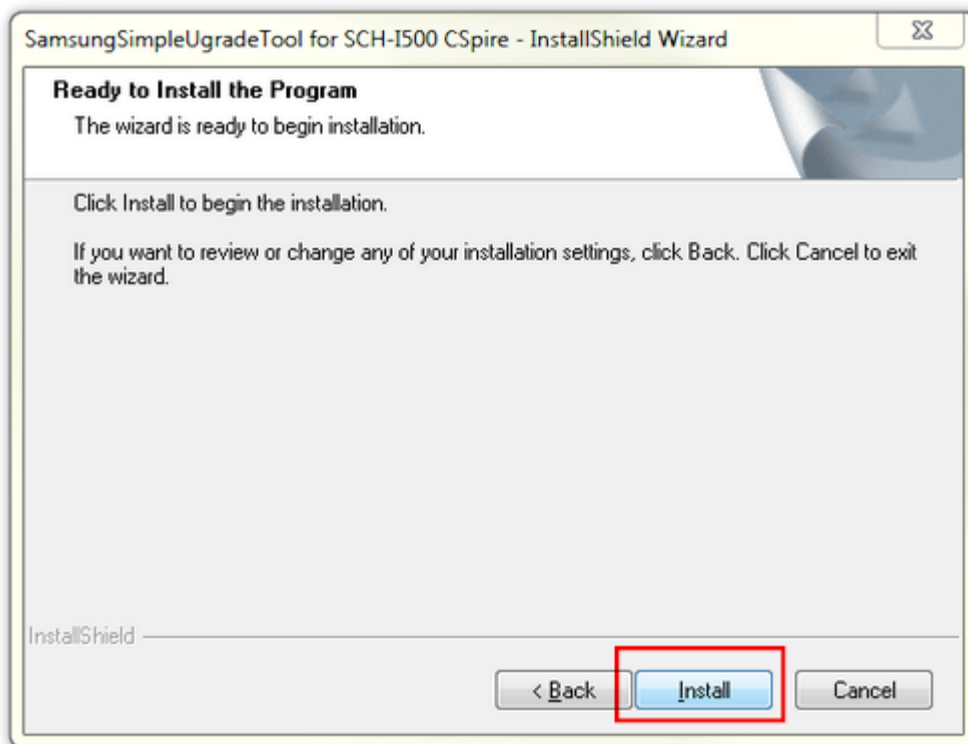
Important: We highly recommend that you uninstall all Samsung software or Samsung drivers from your PC before beginning the installation.



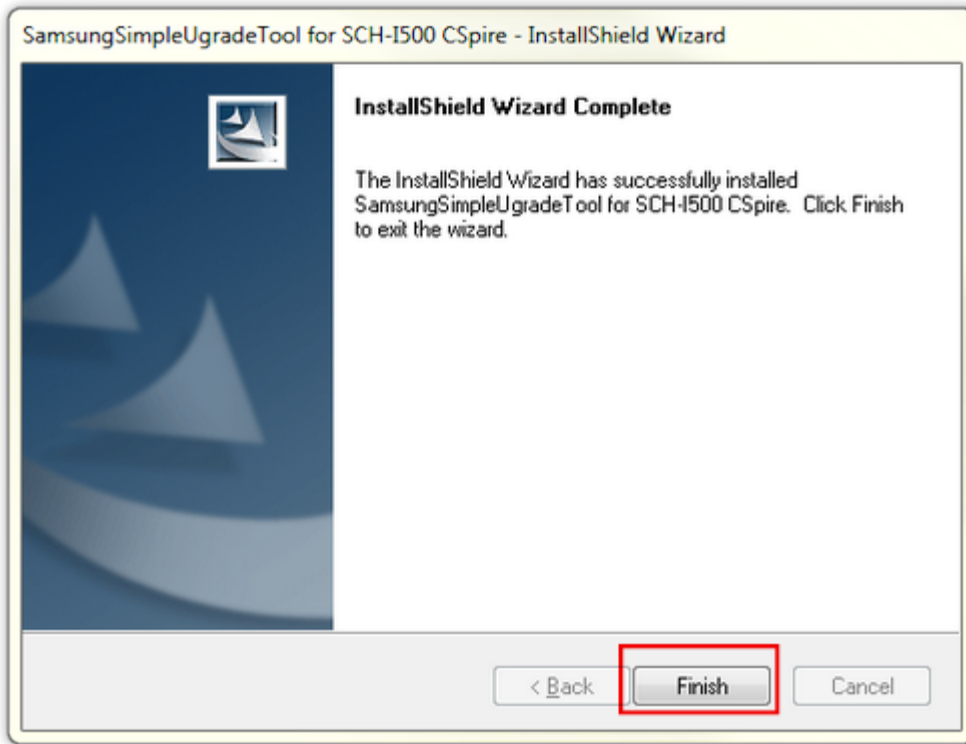
1. Double click the SimpleDL file . The program will install the Simple Upgrade Tool on your computer.
2. Select Next > to continue.




3. Select Install to begin the installation.




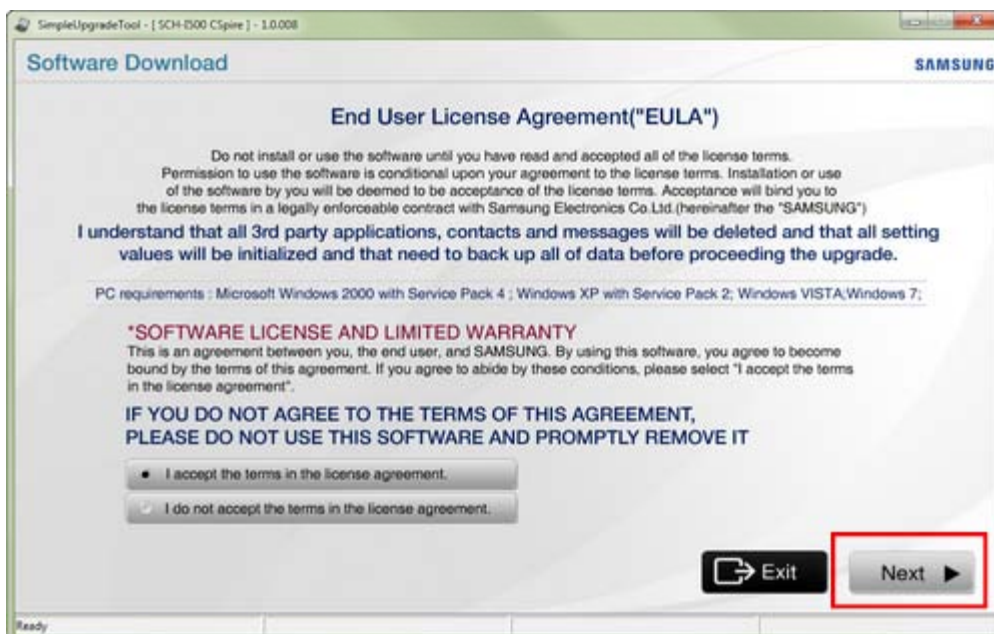
4. After the Simple Upgrade Tool has been installed, select Finish. If directed to Restart computer, select Yes, I want to restart my computer now and select Finish.



5. Please Notice the new  icon that has been installed on your Desktop.

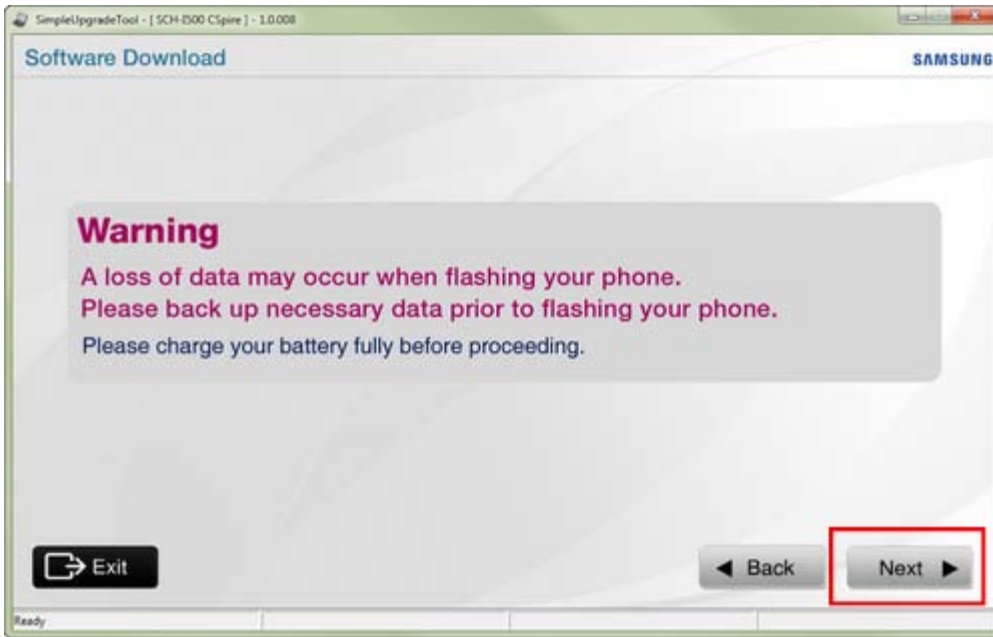
Step 3: Device Upgrading

1. Click on the Samsung Simple Upgrade Tool  icon on your Desktop.
2. After reading the End User License Agreement, check the button "I accept the terms in the license agreement." and then select Next.

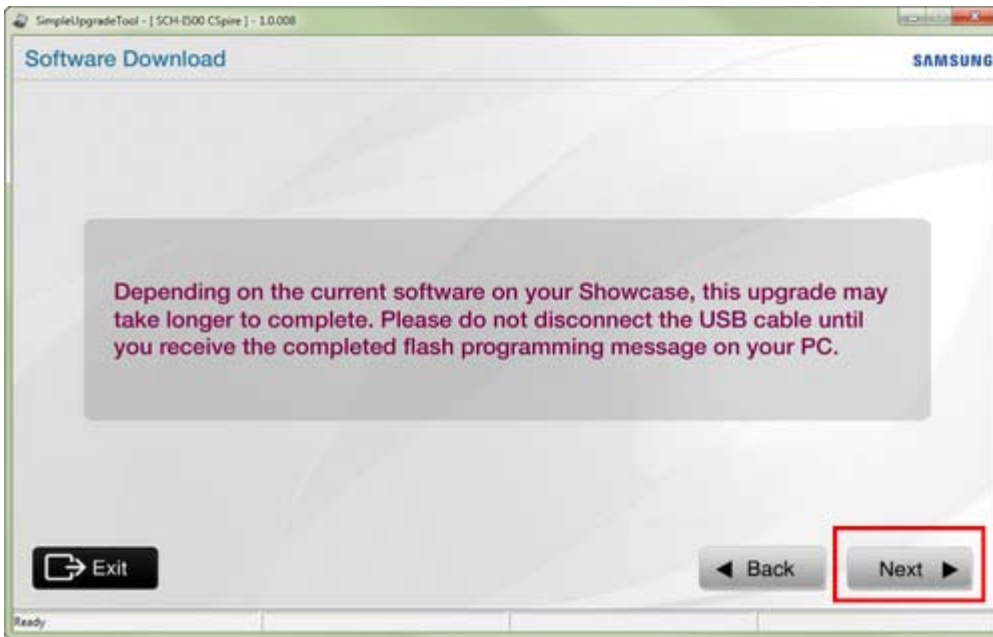


3. A warning will prompt you to synchronize the data on your mobile device and to charge your battery fully before proceeding

with the software upgrade. Select Next after these steps have been performed.

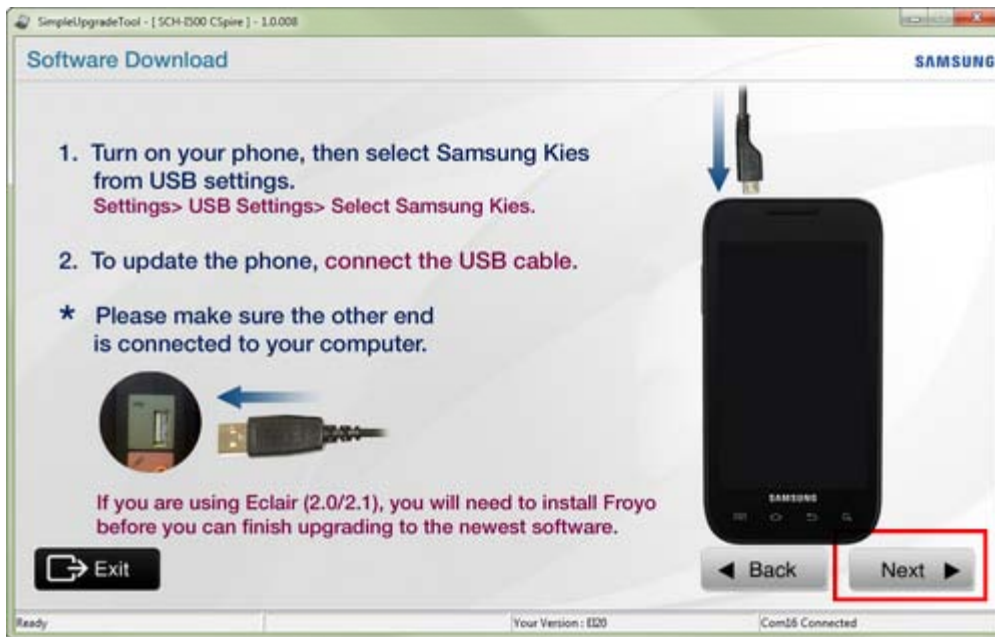


4. When updating from Build number SCH-I500.DJ20 the device will restart. Do not not disconnect the USB cable until the Completed Flash Programming message is received.

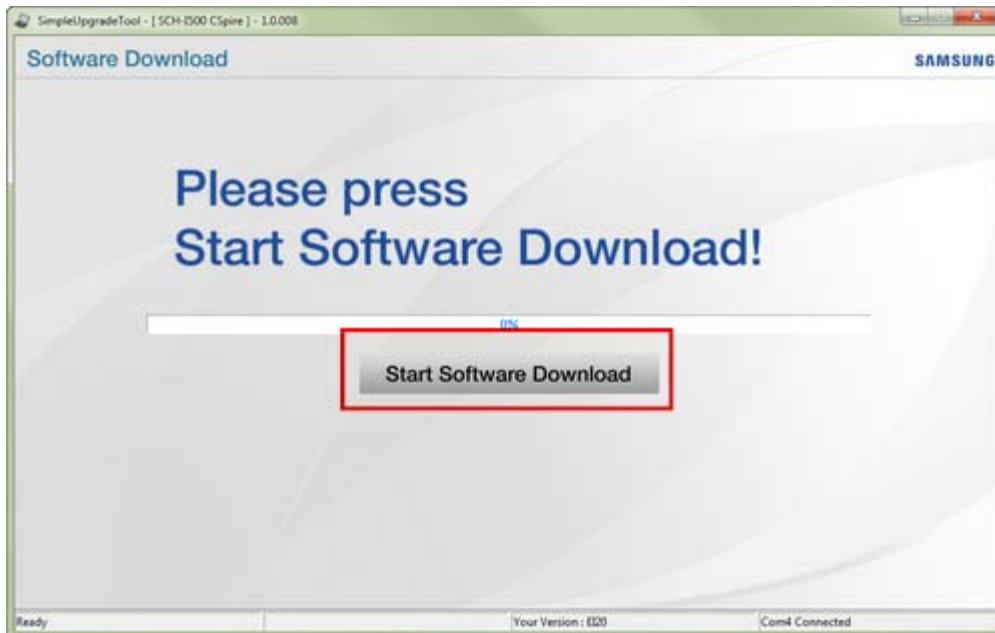


5. Power on the mobile device and set the USB Setting to Samsung Kies.
 - From the Home screen, press the Menu button > Settings > USB Settings > Samsung Kies.

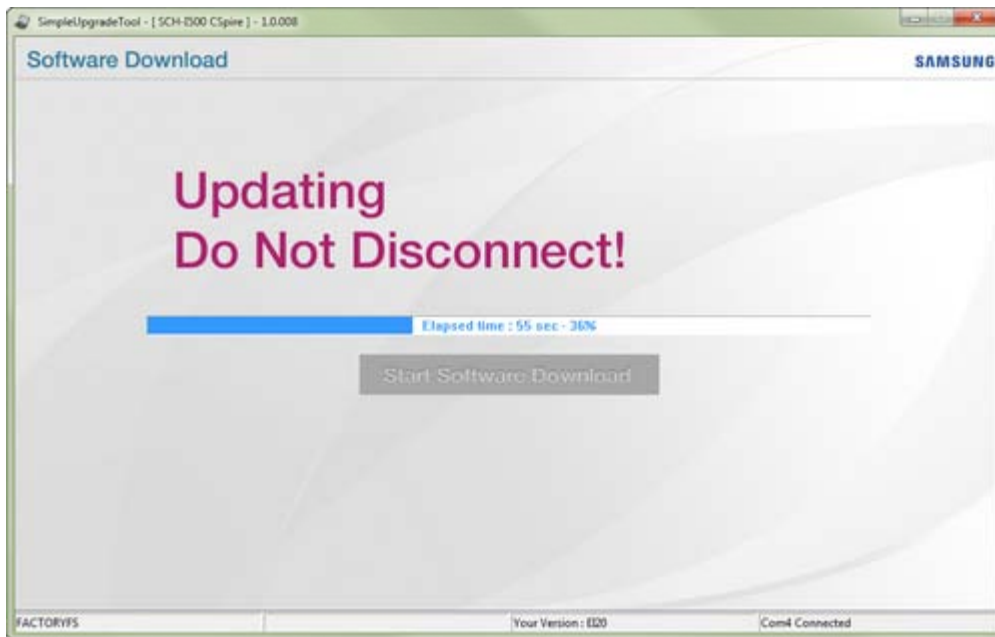
Attach the USB cable from the computer to the mobile device and select Next.



6. Press Start Software Download button to start the upgrade process.



7. Do not disconnect the USB cable from the computer or the mobile device. The mobile device may be inoperable if disconnected during the upgrade process.



8. If upgrading from Build number SCH-I500.EE25 or SCH-I500.EI20, proceed to [Step 13](#) below.

When updating from Build number SCH-I500.DJ20 the device will restart during the update process and the camera firmware will be updated.

Do Not Disconnect the USB Cable From The Computer Or the Mobile Device.

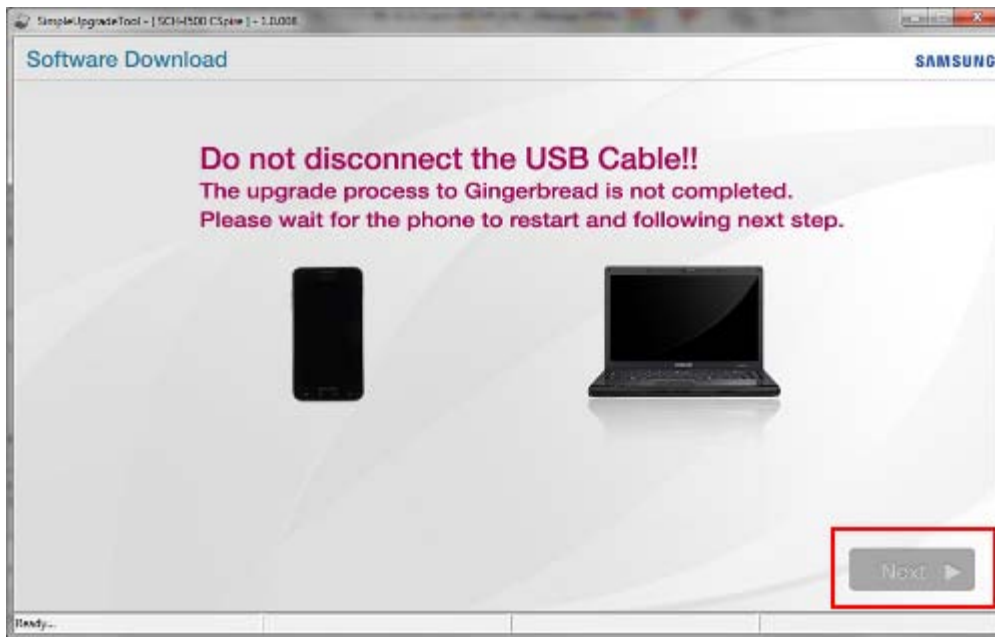
Note: A microSD Memory Card must be installed before upgrading the camera firmware.

To update the camera firmware:

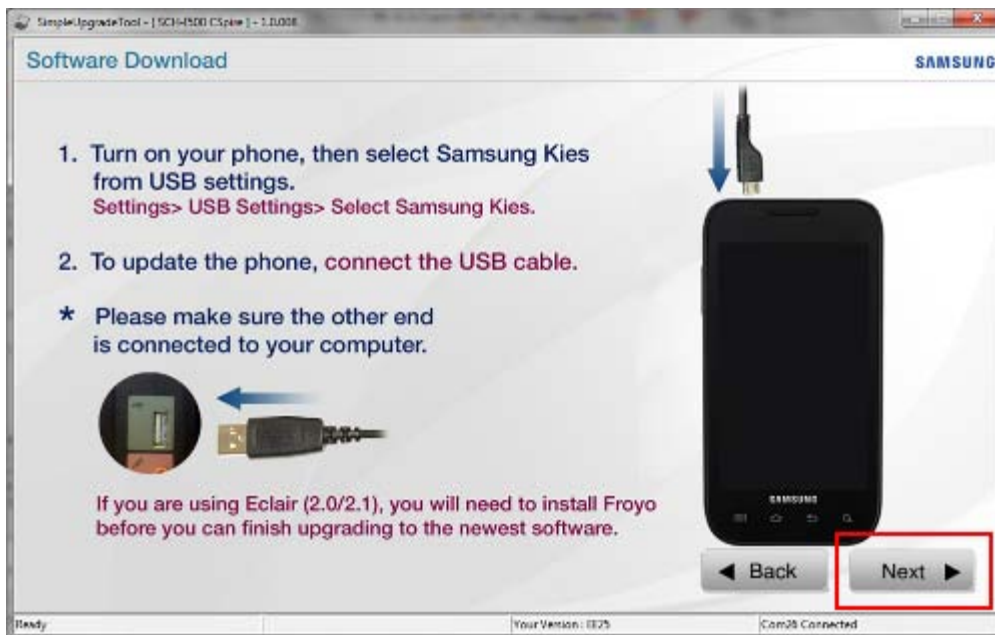
- Wait for the mobile device to completely reboot and the home screen is displayed
- Start the camera:
 - Press Application > Camera
 - Select Yes to update the firmware
 - After the camera firmware is updated, press the Home key to return to the home screen

9. Select Next to continue with the update.

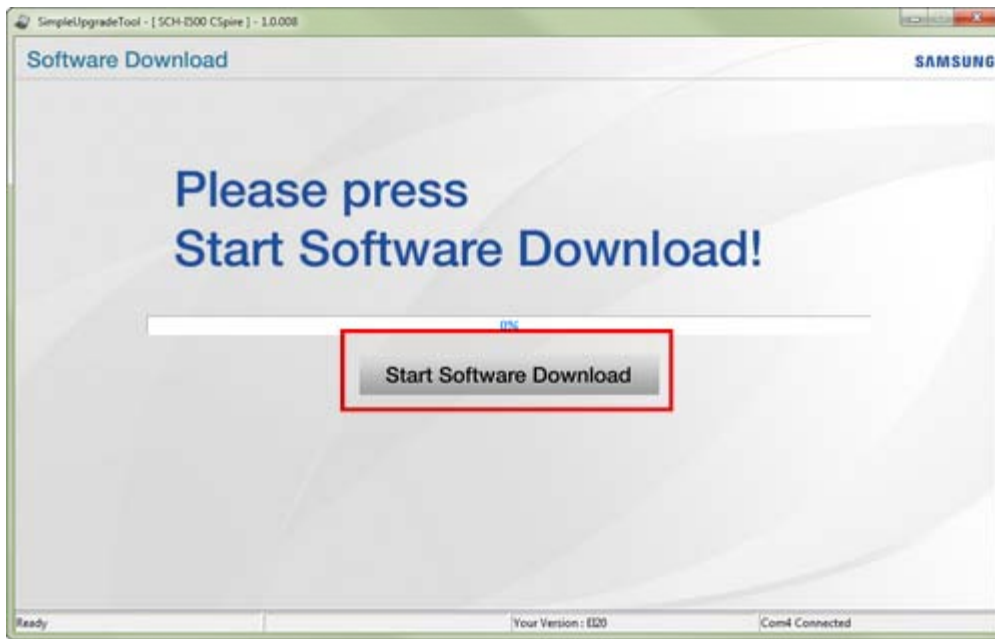
Note: It may take up to 5 minutes for the Next option to highlight.



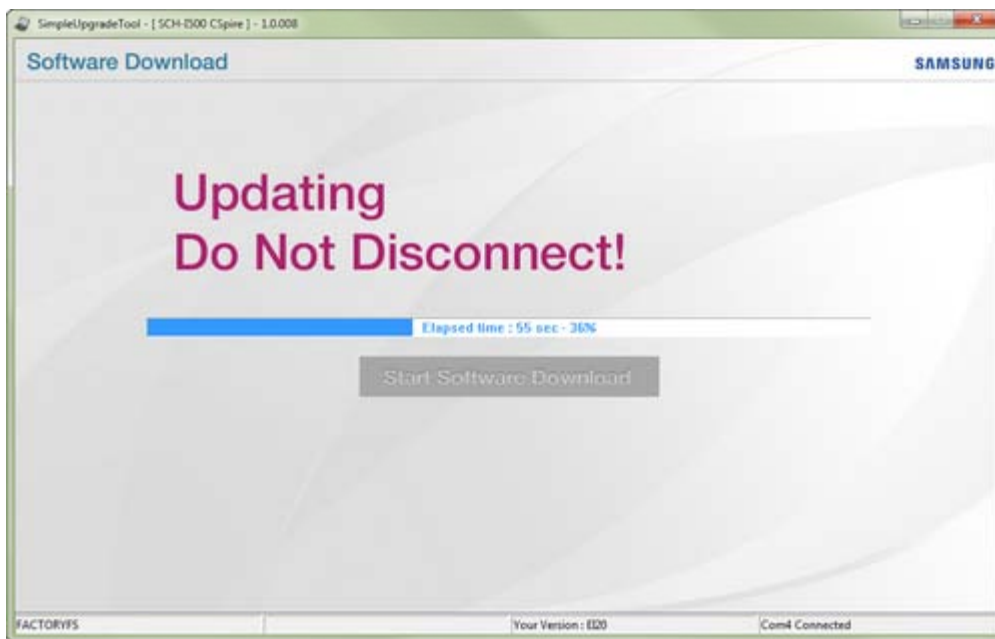
10. Select Next once highlighted to continue software download.



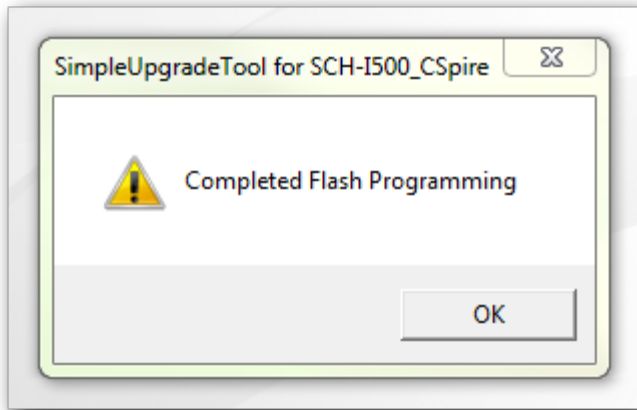
11. Press Start Software Download button.



12. Do not disconnect the USB cable from the computer or the mobile device. The mobile device may be inoperable if disconnected during the upgrade process.



13. A popup message will show that the software upgrade is complete. Select OK and then Exit the Simple Upgrade Tool.



14. After the software upgrade, the phone will restart.
15. Unplug the USB cable from the computer and the mobile device.

Release Notes

- Google Platform Version upgrade from Gingerbread 2.3.5 to Gingerbread 2.3.6
- Preload App Changes:
 - Amazon MP3 Version 2.0.15
 - BarcodeScanner Version 4.0
 - Scout (Discover Apps change)
 - TextCS Version 1.4
- The default email signature updated to C Spire Wireless
- GMS Version upgrade
- Google Security Patches
- Fixed:
 - Flash in Camcorder mode
 - The screen lights (turns on) randomly
 - When pressing the power button the device takes a screen shot, screen capture feature removed
 - When using the desk dock, mute was incorrectly displayed